

Upgrading the Firmware for the COOLPIX 7900



— *Windows* —

Thank you for choosing a Nikon product. This guide describes how to upgrade the firmware for COOLPIX 7900 digital cameras. ***If you are not confident that you can perform the update successfully, the update can be performed by a Nikon service representative.***

1 Get ready

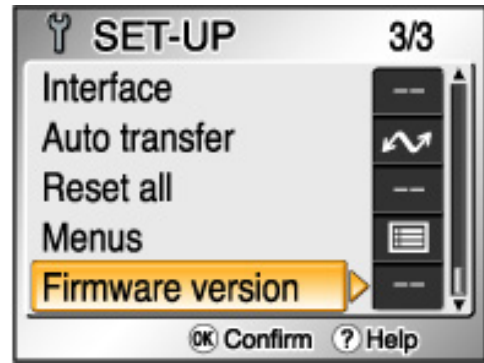
To upgrade the camera firmware, you will need:

- The camera
- A UC-E6 USB cable or a SD card reader
- One of the following power sources:
 - An EH-62A AC adapter kit
 - A fully-charged EN-EL5 rechargeable Li-ion battery
- A Nikon-approved memory card that has been formatted in the camera
- The camera ***Guide to Digital Photography***

2 Check the current camera firmware version

1 Rotate the mode dial to **SET UP** and turn the camera on.

2 The setup menu will be displayed in the camera monitor. Select **Firmware version**.



3 The current firmware version will be displayed. This upgrade can be used with firmware version 1.1.



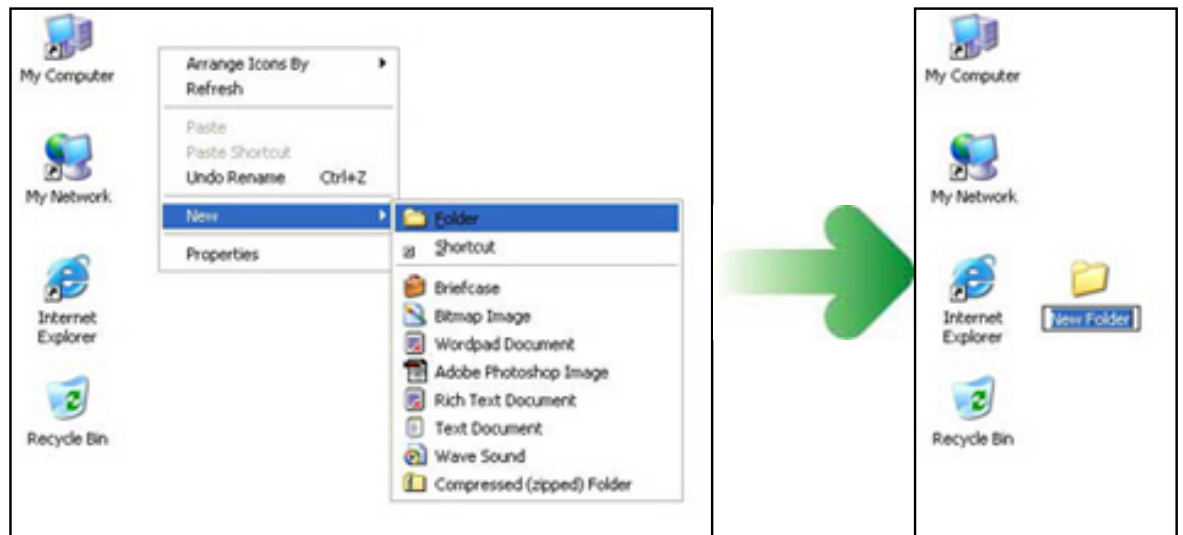
COOLPIX 7900

4 Exit to the setup menu and turn the camera off.

3

Download and extract the new firmware

1 Right-click an empty area of the desktop and select **New > Folder** from the menu that appears. Name the folder as desired.



2 Download the file "CP7900fw12.zip" to the new folder.
 Position the mouse cursor over the "**Click here to download**" link (above) and click the right mouse button. Select Save target to file and choose the folder created in Step 3 -1. The file "CP7900fw12.zip" will be downloaded to the new folder.

3 Extract the firmware update.
 In Windows XP, right click on the "CP7900fw12.zip" folder and choose "Extract All..."

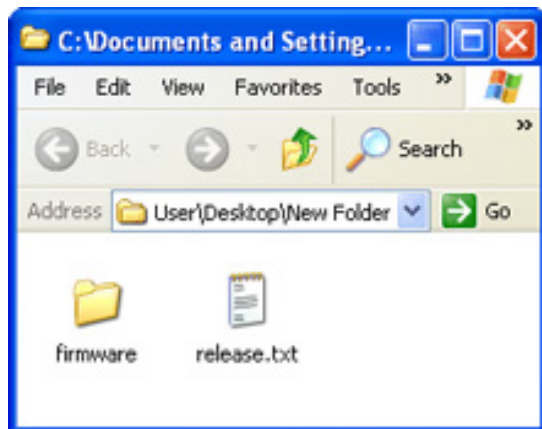
Other versions of Windows - for general instructions on downloading and installing.

If installation is completed successfully, the folder "E7900Update" will be created in the new folder. The folder "E7900Update" will contain the following files and folders:

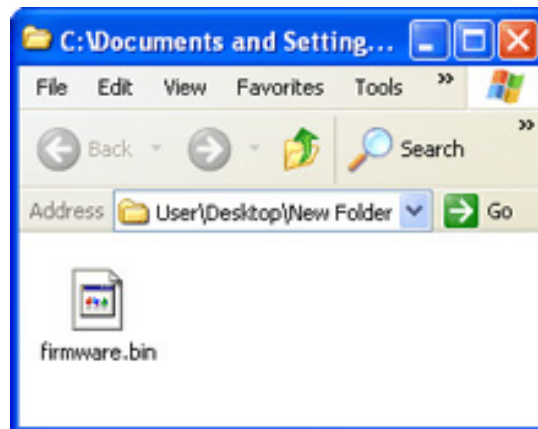
release.txt: Details the changes made with the release of firmware version 1.2

firmware: Folder containing camera firmware

firmware.firmware.bin: Camera firmware (in "firmware" folder)



"Update" folder



"firmware" folder

4

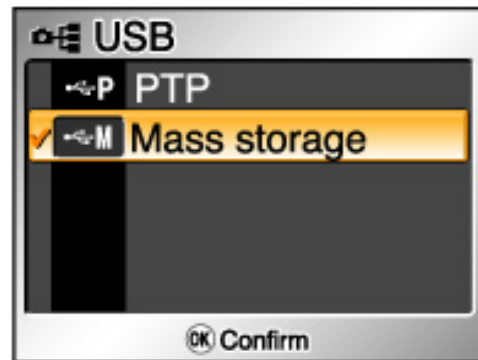
Copy the firmware to the memory card

The firmware can be copied to the camera memory card either by connecting the computer directly to the camera using the USB cable, or by removing the memory card from the camera and inserting it in a card reader.

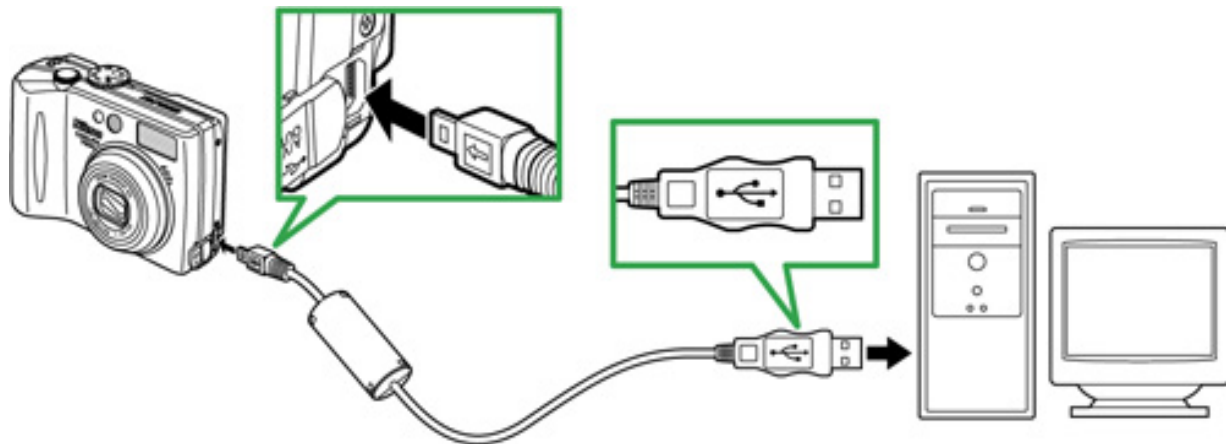
Direct USB Connection

Note: Use the EH-62A AC adapter kit or a fully-charged EN-EL5 rechargeable Li-ion battery.

- 1 Turn the camera off and insert a formatted memory card. For information on formatting memory cards, see the camera *Guide to Digital Photography*.
- 2 Rotate the camera mode dial to **SET UP** and turn the camera on. Select **Mass storage** for **Interface >USB**.



- 3 Turn the camera off and connect the USB cable as shown below.



UC-E6 USB cable

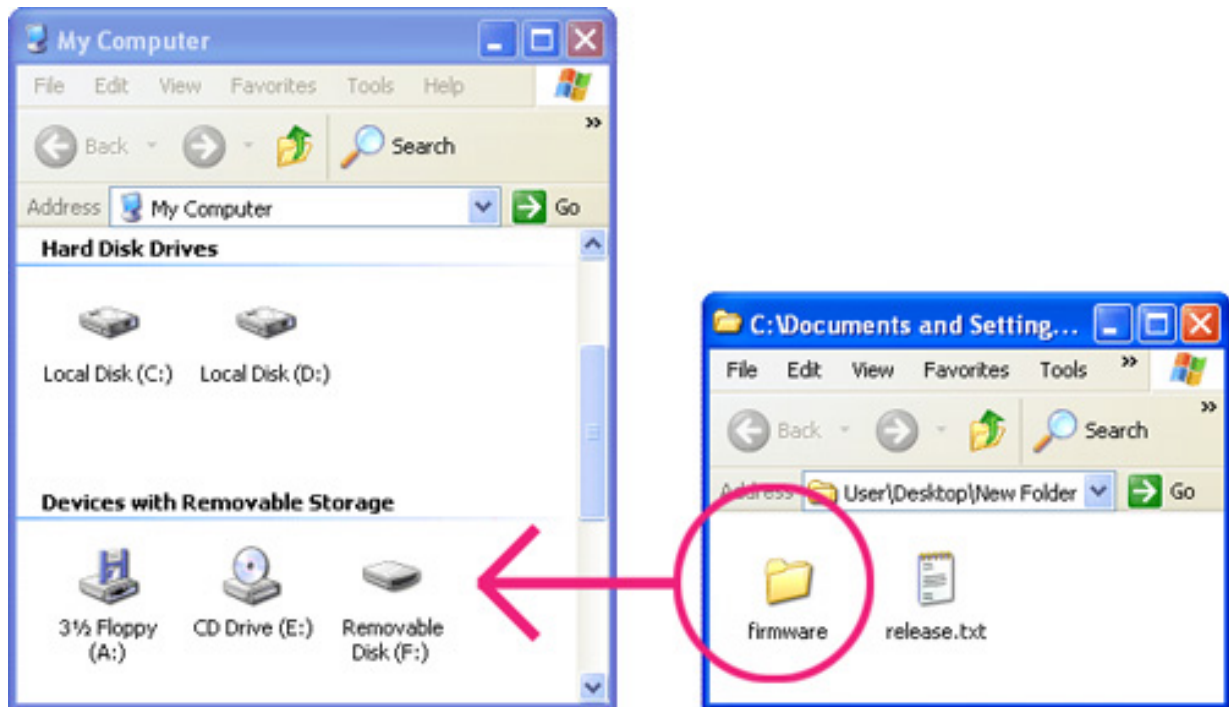
- 4 Turn the camera on. If PictureProject is installed, it will start automatically; click **Cancel** to exit.

AutoPlay (Windows XP)

Under Windows XP, a Removable Disk dialog may be displayed. Click **Cancel**.



- 5 The camera will appear in "My Computer" as a removable disk. Copy the "firmware" folder from the "Update" folder to the removable disk.



Drive letters may differ

When copying is complete, open the "firmware" folder on the removable disk and confirm that it contains the file "firmware.bin".

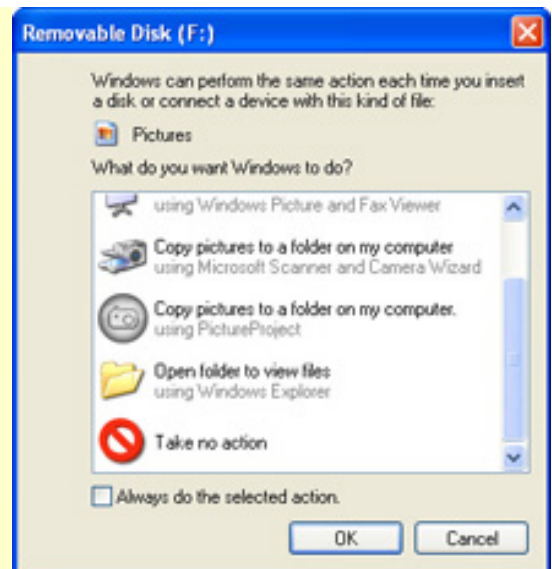
- 6 Disconnect the camera from the computer. For more information, see the *Guide to Digital Photography*.

Card Reader

- 1 Connect the card reader to the computer and insert a formatted memory card. If PictureProject is installed, it will start automatically; click **Cancel** to exit.

AutoPlay (Windows XP)

Under Windows XP, a Removable Disk dialog may be displayed. Click **Cancel**.



- 2 The memory card will appear in "My Computer" as a removable disk. Copy the firmware to the removable disk as described in Step 5 of "Direct USB Connection."
- 3 Right click the removable disk and select **Eject** from the menu that appears. Remove the memory card from the card reader.

5

Update the camera firmware

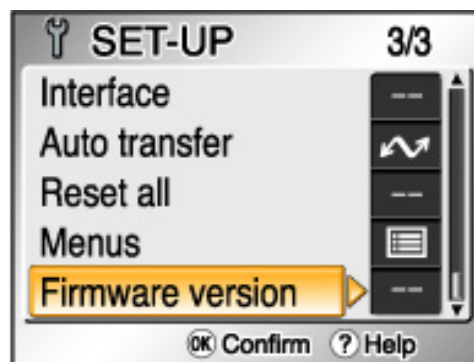
During the update, do not:

- Removing the memory card
- Turning the camera off
- Unplugging or disconnecting the AC adapter
- Removing the battery
- Subjecting the camera to powerful electromagnetic noise

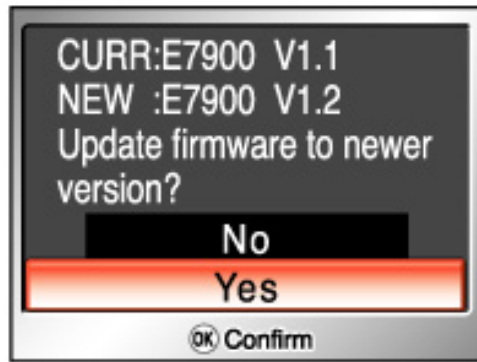
Any of the above actions could cause the camera to become inoperable.

- 1 Insert the memory card containing the firmware into the camera.

- 2 Rotate the mode dial to **SET UP** and turn the camera on. The setup menu will be displayed in the camera monitor; select **Firmware version**.



- 3 A firmware update dialog will be displayed. Select **Yes** and press the center of the multi selector to begin the update.

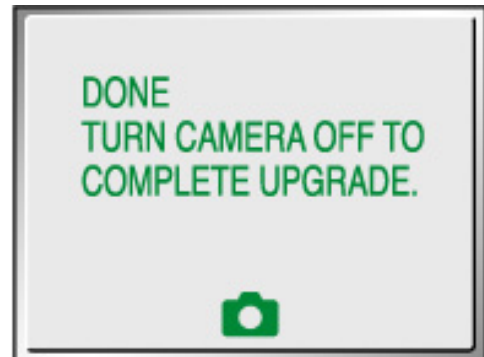


COOLPIX 7900

The message shown at right will be displayed while the update is in progress.



The message shown at right will be displayed when the update is complete.



4

Confirm that the update was completed successfully.

4-1. Turn the camera off and remove the memory card.

4-2. Check the camera firmware version as described in Step 2, "Check the current camera firmware version."

4-3. If the version displayed is 1.2, the update was successful.



COOLPIX 7900

If the update was not successful, contact a Nikon service representative.

5 **Format the memory card.**

6 If you changed the **USB** setting from **PTP** to **Mass storage** to update the camera firmware, return to the **USB** menu and select **PTP**.

This completes the firmware update.