



Upgrading the Firmware for the WT-1 Wireless Transmitter

— Windows —

Thank you for choosing a Nikon product. This guide describes how to upgrade the firmware for the WT-1 wireless transmitter. Please note that a **D2H digital camera is required to perform this upgrade**. If desired, this upgrade can be performed by a Nikon service representative.

Important: *The camera and WT-1 may be damaged if power is interrupted or camera controls are operated during the upgrade. Do not turn the camera off, remove or disconnect the power source, or operate the camera controls during the upgrade. Should the upgrade fail and the camera or WT-1 become inoperable, take the equipment to a Nikon-authorized service representative for inspection.*



Get ready

To upgrade the firmware for the WT-1, you will need:

- A WT-1 wireless transmitter
- A Nikon D2H digital SLR camera
- A UC-E4 USB cable or a CompactFlash card reader
- One of the following power sources:
 - An EH-6 AC adapter
 - A fully-charged EN-EL4 rechargeable Li-ion battery

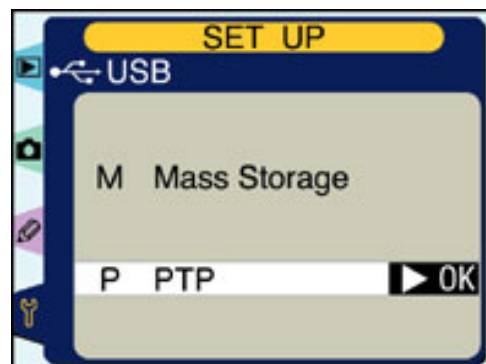
- A Nikon-approved CompactFlash memory card that has been formatted in the D2H (do not use Microdrive cards).
- The *WT-1 User's Manual* and the *Nikon Guide to Digital Photography with the D2H*

2

Check the current firmware version

1 Connect the WT-1 to the D2H as described in the WT-1 manual and turn the camera on.

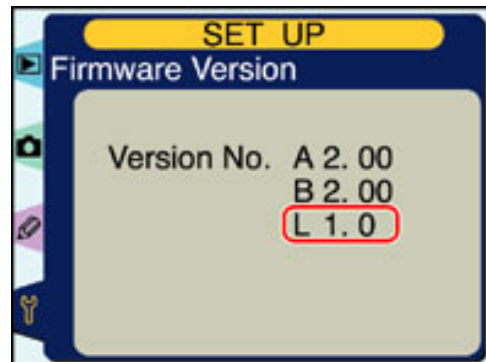
2 Press the camera **MENU** button and select **USB** from the camera setup menu. Highlight **PTP** and press the multi selector right to return to the setup menu.



3 Highlight **Firmware Version** and press the multi selector right.



4 The current firmware version for the WT-1 is displayed as firmware version "L." This upgrade can be used with version 1.0.

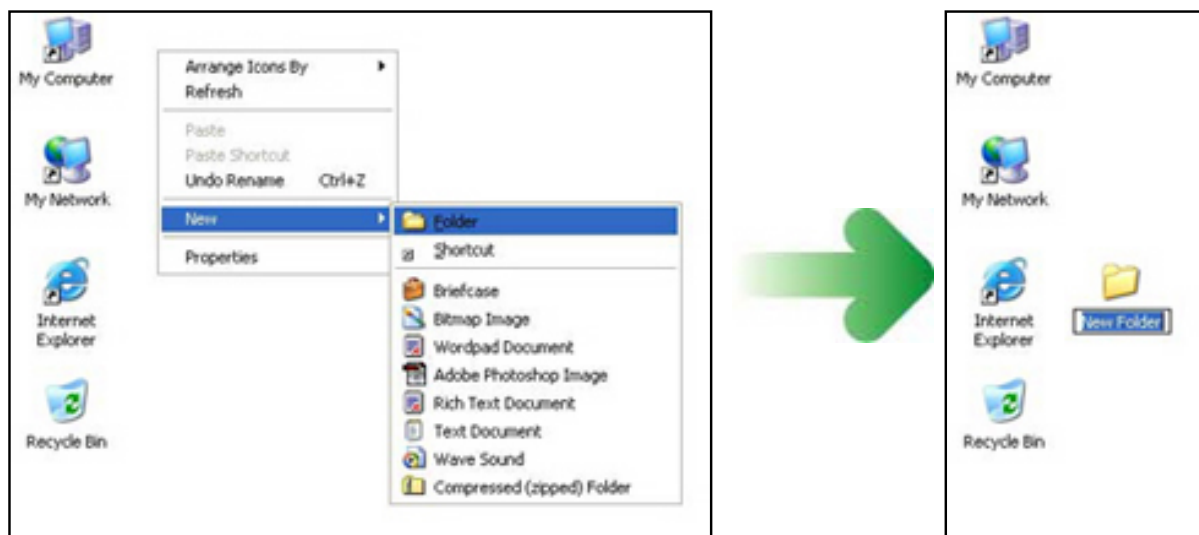


5 Turn the camera off.

3

Download and extract the new firmware

1 Right-click an empty area of the desktop and select **New>Folder** from the menu that appears. Name the folder as desired.



2 Download the file "_WT1110_.bin" to the new folder.

Position the mouse cursor over the "Click here to Agree to Licenses and Start Download" link on the download site (above) and click the right mouse button. Select Save target to file and choose the folder created in step 3 -1. The file "_WT1110_.bin" will be downloaded to the new folder.

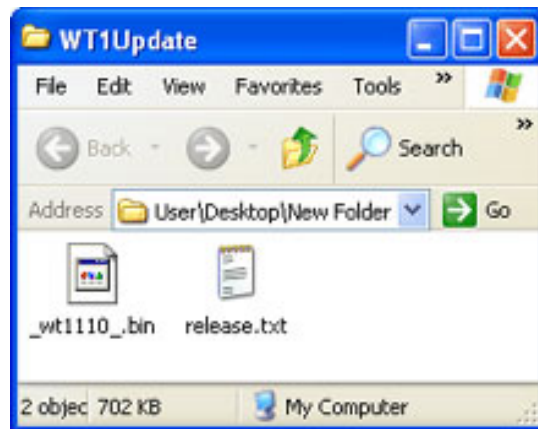
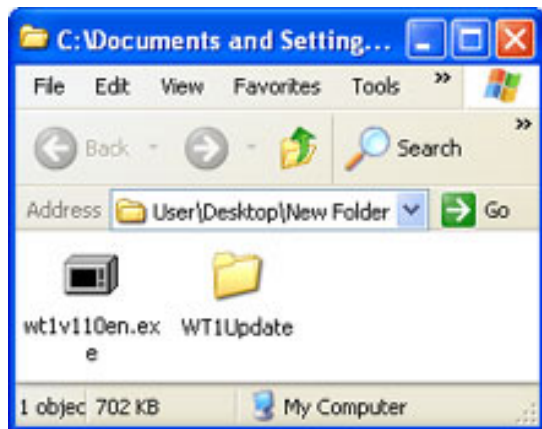
3 Extract the firmware update.
In Windows XP, right click on the "_WT1110_.bin" folder and choose "Extract All..."

Other versions of Windows - for general instructions on downloading and installing.

If installation is completed successfully, the folder "WT1 Update" will be created in the new folder. The folder "WT1 Update" will contain the following files:

WT1110—WT-1 firmware
bin:

release.txt:Details the changes made with the release of firmware version 1.1.



"WT1Update" folder

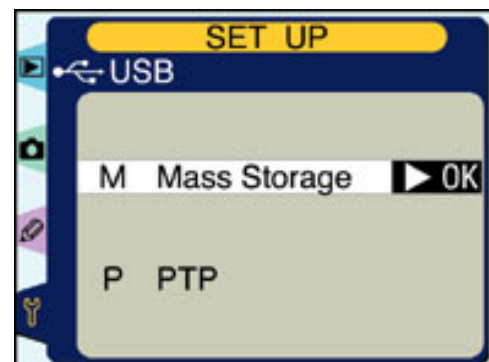
4

Copy the firmware to the memory card

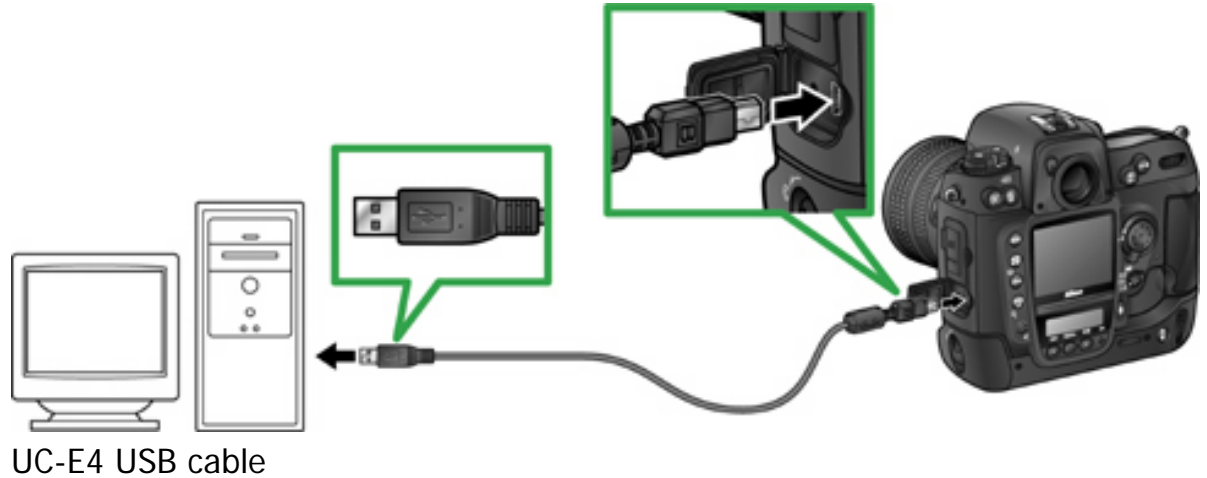
The firmware can be copied to the camera memory card either by connecting the computer directly to the camera using the USB cable, or by removing the memory card from the camera and inserting it in a CompactFlash card reader.

Direct USB Connection

- 1 Disconnect the WT-1.
- 2 Turn the camera off and insert a formatted memory card. For information on formatting memory cards, see the *Guide to Digital Photography*.
- 3 Turn the camera on and set the **USB** option in the camera setup menu to **Mass Storage**.



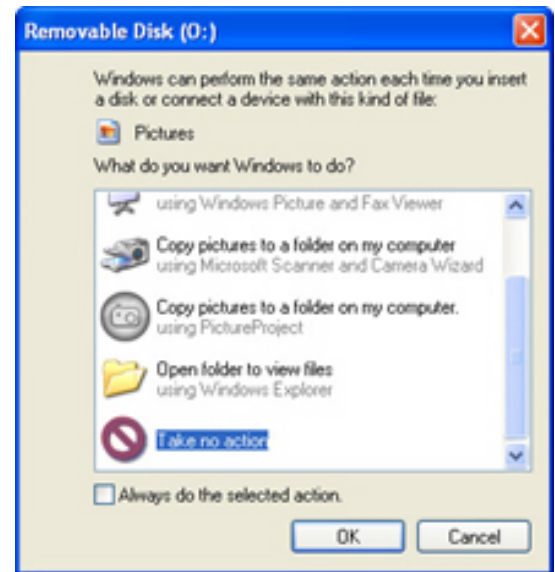
- 4** Turn the camera off and connect the USB cable as shown below.



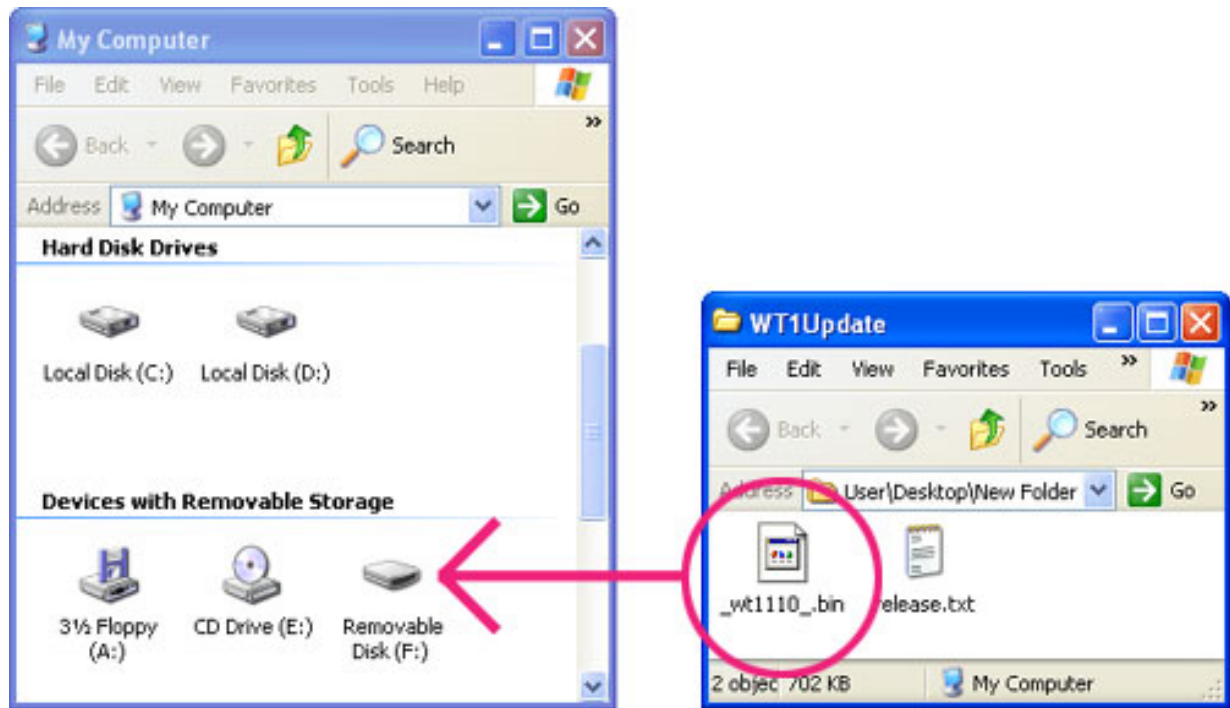
- 5** Turn the camera on.
- **If Nikon View is installed:** Under some operating systems, Nikon Transfer may start and display the message, "Camera or card contains no images. Nikon View will now terminate." Click **OK** to exit Nikon Transfer.
 - **If PictureProject is installed:** Under some operating systems, PictureProject may start automatically. Click **Cancel**.

AutoPlay (Windows XP)

Under Windows XP, a Removable Disk dialog similar to that shown at right may be displayed when the camera is turned on. Select **Take no action** and click **OK**.



- 6** The camera will appear in "My Computer" as a removable disk. Copy "_WT1110_.bin" from the "WT1 Update" folder to the removable disk. When copying is complete, open the removable disk and confirm that it contains the file "_WT1110_.bin".



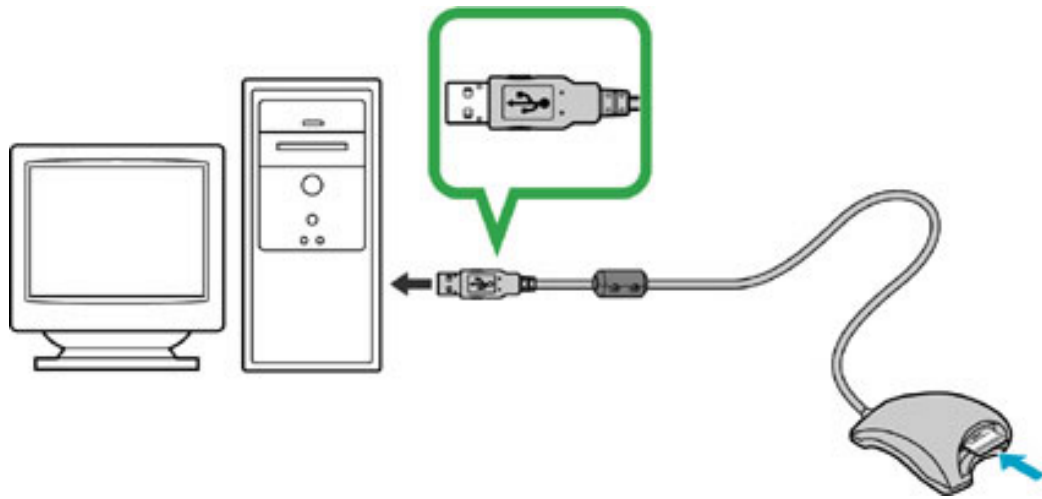
Drive letters may differ

Important: *Copy the firmware to the root directory of the memory card. The camera will not recognize firmware that has been placed in a folder under the root directory.*

- 7** Disconnect the camera from the computer. For more information, see the **Guide to Digital Photography**.
- 8** Turn the camera off and connect the WT-1.
- 9** Turn the camera on and set the **USB** option in the setup menu to **PTP**.

CompactFlash Card Reader

- 1** Connect the card reader to the computer. For more information, see the documentation provided with the card reader.



2

Insert the formatted memory card into the card reader.

- **If Nikon View is installed:** Under some operating systems, Nikon Transfer may start and display the message, "Camera or card contains no images. Nikon View will now terminate." Click **OK** to exit Nikon Transfer.
- **If PictureProject is installed:** Under some operating systems, PictureProject may start automatically. Click **Cancel**.

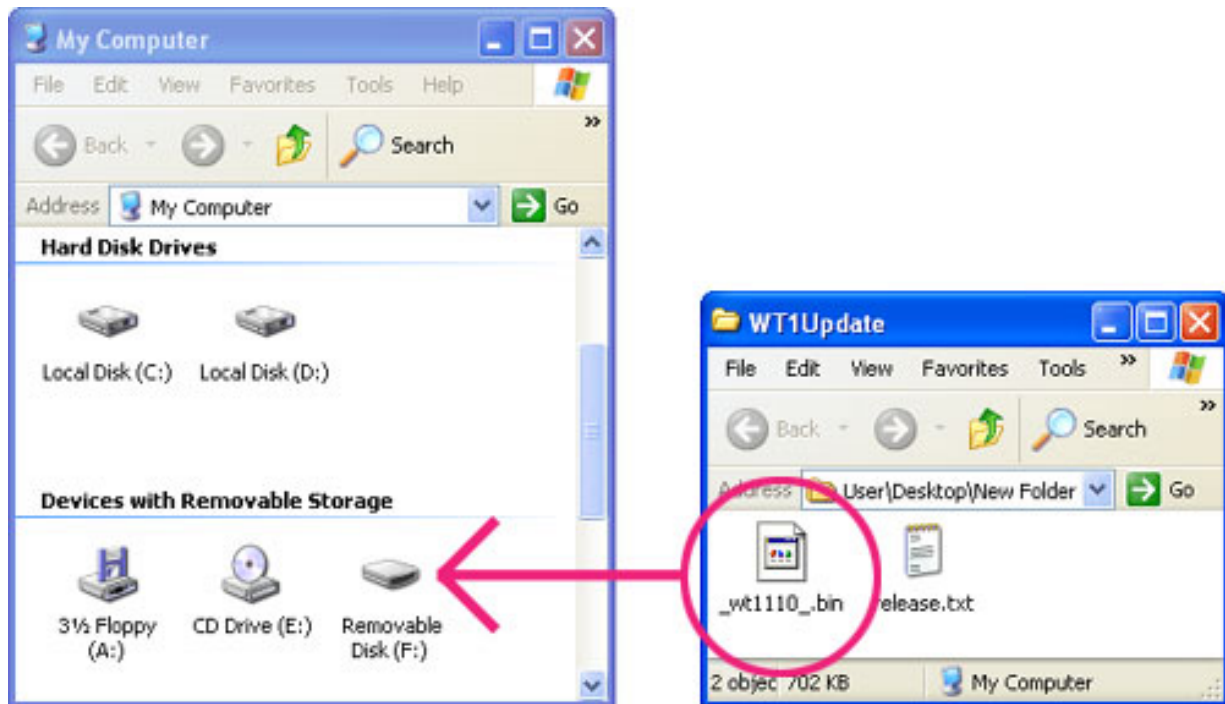
AutoPlay (Windows XP)

Under Windows XP, a Removable Disk dialog similar to that shown at right may be displayed when the camera is turned on. Select **Take no action** and click **OK**.



3

The memory card will appear in "My Computer" as a removable disk. Copy "_WT1110_.bin" from the "WT1 Update" folder to the removable disk. When copying is complete, open the removable disk and confirm that it contains the file "_WT1110_.bin".



Drive letters may differ

Important: Copy the firmware to the root directory of the memory card. The camera will not recognize firmware that has been placed in a folder under the root directory.

- 4** Right-click the removable disk and select **Eject** from the menu that appears. Remove the memory card from the card reader.
- 5** Disconnect the card reader. For more information, see the documentation provided with the card reader.

5 Update the firmware

During the update, do not:

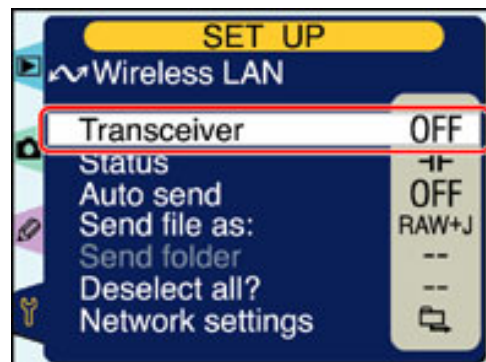
- Remove the memory card
- Disconnect the USB cable or disconnect the WT-1 from the camera
- Turn the camera off

- Operate camera controls
- Unplug or disconnect the AC adapter
- Remove the battery
- Subject the camera to powerful electromagnetic noise

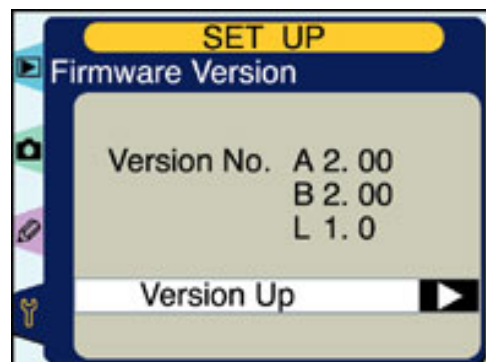
Any of the above actions could cause the camera or WT-1 to become inoperable.

1 Insert the memory card containing the firmware into the camera and turn the camera on.

2 Press the **MENU** button and select **Wireless LAN** from the camera setup menu. Confirm that **Off** is selected for **Transceiver** and press the multi selector left to return to the setup menu.



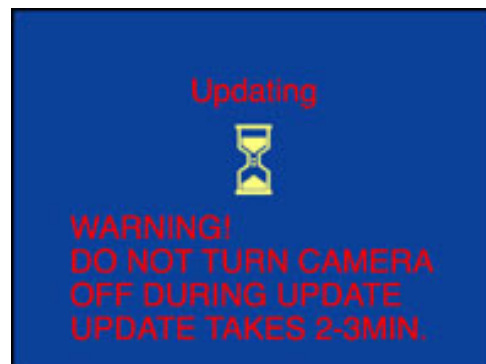
3 Select **Firmware Version** to display the current firmware version for the WT-1.



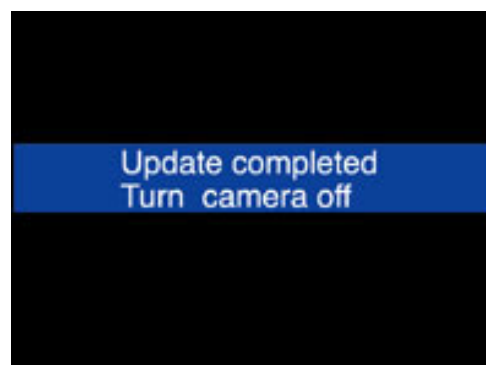
4 Press the multi selector right. A firmware update dialog will be displayed; highlight **Yes** and press the **ENTER** button to begin the update.



The message shown at right will be displayed while the update is in progress. From two to five minutes are required to complete the update.



The message shown at right will be displayed when the update is complete.

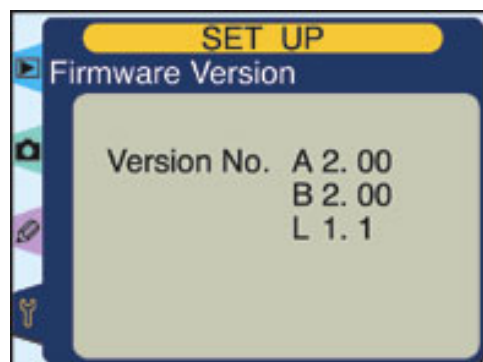


5

Confirm that the update was completed successfully.

5-1. Turn the camera off and remove the memory card.

5-2. Check the firmware version for the WT-1 as described in Step 2 , "Check the current firmware version." If the "L" firmware is version 1.1, the update was successful.



6

Format the memory card. See the **Guide to Digital Photography** for more information.

for

This completes the firmware update.