



Upgrading the Firmware for the WT-1 Wireless Transmitter

— *Macintosh* —

Thank you for choosing a Nikon product. This guide describes how to upgrade the firmware for the WT-1 wireless transmitter. Please note that a D2H digital camera is required to perform this upgrade. If desired, this upgrade can be performed by a Nikon service representative.

Important: The camera and WT-1 may be damaged if power is interrupted or camera controls are operated during the upgrade. Do not turn the camera off, remove or disconnect the power source, or operate the camera controls during the upgrade. Should the upgrade fail and the camera or WT-1 become inoperable, take the equipment to a Nikon-authorized service representative for inspection.



Get ready

To upgrade the firmware for the WT-1, you will need:

- A WT-1 wireless transmitter
- A Nikon D2H digital SLR camera
- A UC-E4 USB cable or a CompactFlash card reader
- One of the following power sources:
 - An EH-6 AC adapter

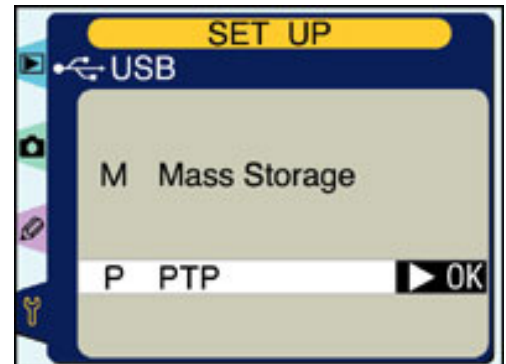
- A fully-charged EN-EL4 rechargeable Li-ion battery
- A Nikon-approved CompactFlash memory card that has been formatted in the D2H (do not use Microdrive cards).
- The *WT-1 User's Manual* and the *Nikon Guide to Digital Photography with the D2H*

2

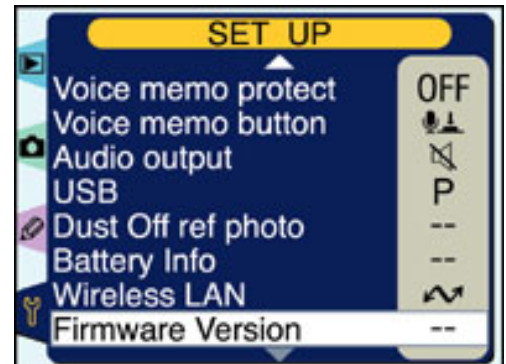
Check the current firmware version

1 Connect the WT-1 to the D2H as described in the WT-1 manual and turn the camera on.

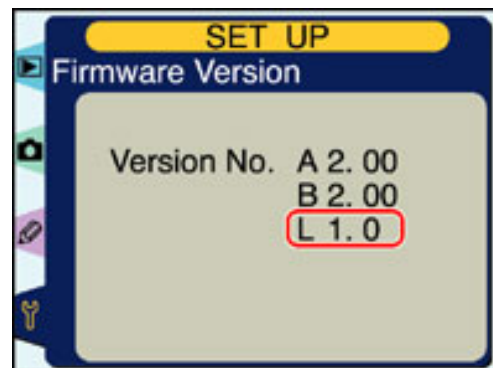
2 Press the camera **MENU** button and select **USB** from the camera setup menu. Highlight **PTP** and press the multi selector right to return to the setup menu.



3 Highlight **Firmware Version** and press the multi selector right.



- 4 The current firmware version for the WT-1 is displayed as firmware version "L". This upgrade can be used with version 1.0.



- 5 Turn the camera off.

3

Download and extract the new firmware

Download "WT1fw11.sit"

Click the **"Agree to License and Download"** link above and download the file. Once download is complete, the file will then be automatically extracted to create the folder "WT1 Update". If extraction is successful, the folder "WT1 Update" will contain the following files:

WT1110—WT-1 firmware
bin:

release.txt:Details the changes made with the release of firmware version 1.1.



4

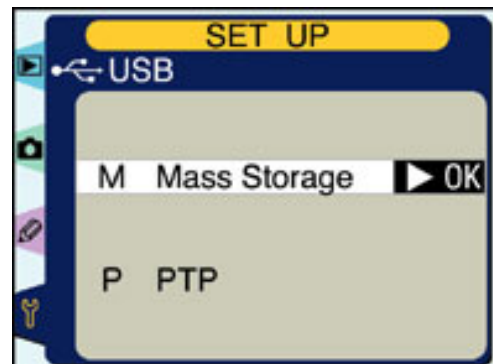
Copy the firmware to the memory card

The firmware can be copied to the camera memory card either by connecting the computer directly to the camera using the USB cable, or by removing the memory card from the camera and inserting it in a CompactFlash card reader.

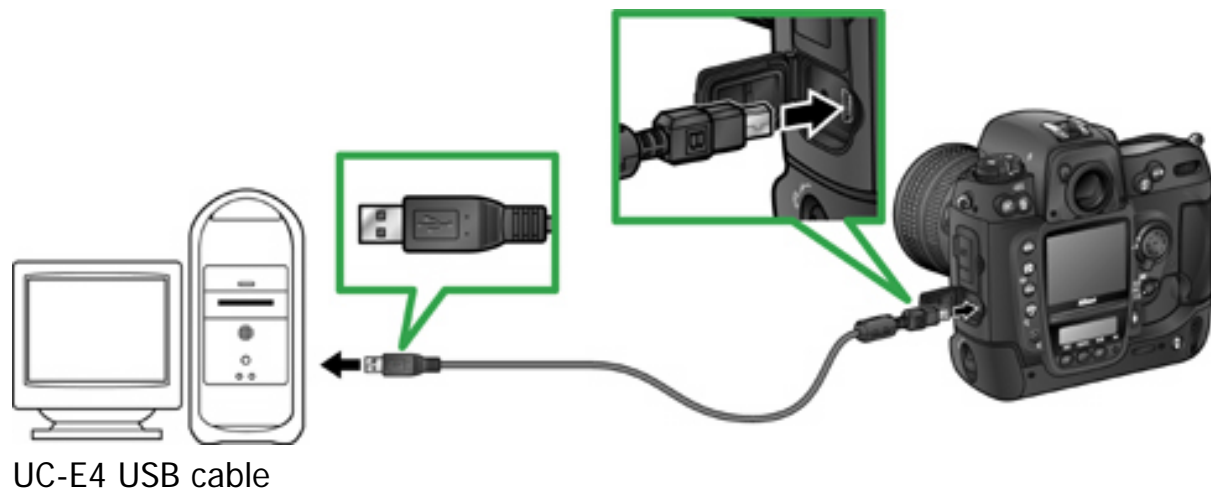
Direct USB Connection

- 1 Disconnect the WT-1.
- 2 Turn the camera off and insert a formatted memory card. For information on formatting memory cards, see the *Guide to Digital Photography*

- 3 Set the **USB** option in the camera setup menu to **Mass Storage**. Press the **MENU** button and select **Mass Storage** in the setup **USB** menu.



- 4 Turn the camera off and connect the USB cable as shown below.



- 5 Turn the camera on.

- **If Nikon View is installed:** Under some operating systems, Nikon Transfer may start and display the message, "Camera or card contains no images. Nikon View will now terminate." Click **OK** to exit Nikon Transfer.

6

Copy the firmware to the memory card.

6-1. Copy the firmware to the "NIKON D2H" volume corresponding to the camera.

When the camera is connected and turned on, the volume "NIKON D2H" will appear on the desktop. Copy "_WT1110_.bin" from the "WT1 Update" folder to this removable disk.



6-2. When copying is complete, confirm that the removable disk contains "_WT1110_.bin".

Important: Copy the firmware to the root directory of the memory card. The camera will not recognize firmware that has been placed in a folder under the root directory.

7

Disconnect the camera from the computer. For more information, see the **Guide to Digital Photography**.

8

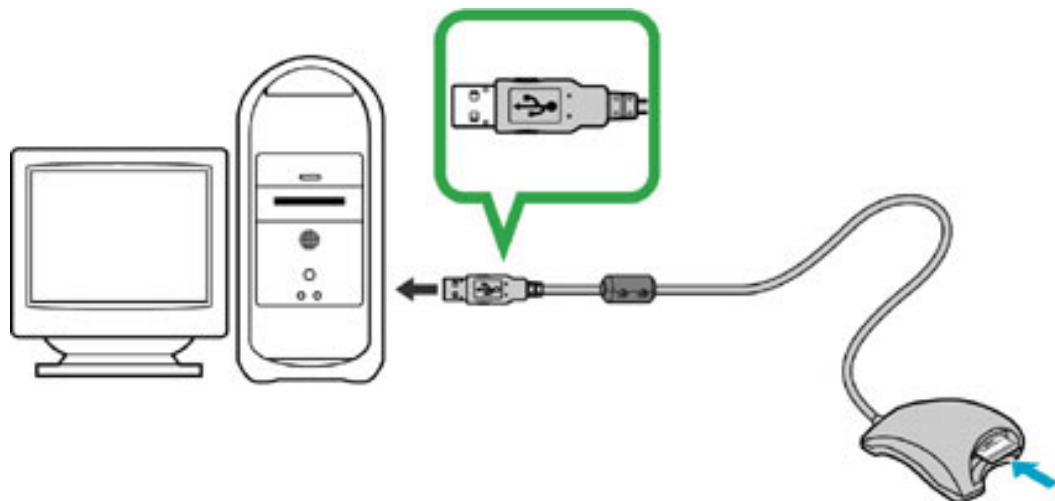
Turn the camera off and connect the WT-1.

9

Turn the camera on and set the **USB** option in the setup menu to **PTP**.

CompactFlash Card Reader

- 1 Connect the card reader to the computer. For more information, see the documentation provided with the card reader.



- 2 Insert the formatted memory card into the card reader.
 - **If Nikon View is installed:** Under some operating systems, Nikon Transfer may start and display the message, "Camera or card contains no images. Nikon View will now terminate." Click **OK** to exit Nikon Transfer.

- 3 Copy the firmware to the memory card.
 - 3-1. Copy the firmware to the "NIKON D2H" volume corresponding to the memory card.

When the memory card is inserted, the volume "NIKON D2H" will appear on the desktop. Copy "_WT1110_.bin" from the "WT1 Update" folder to this removable disk.



- 3-2. When copying is complete, confirm that the removable disk contains "_WT1110_.bin".

- 3-3. Remove the memory card.
Drag the "NIKON D2H" volume into the Trash and remove the memory card from the card reader.

- 4** Disconnect the card reader. For more information, see the documentation provided with the card reader.

Important: Copy the firmware to the root directory of the memory card. The camera will not recognize firmware that has been placed in a folder under the root directory.

5

Update the firmware

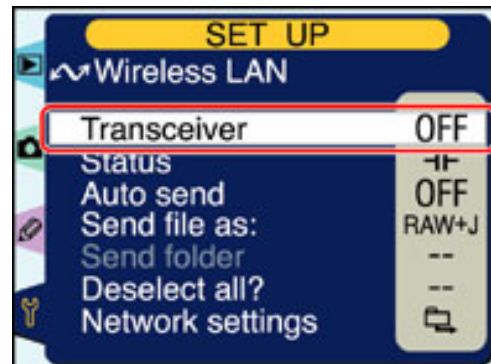
During the update, do not:

- Remove the memory card
- Disconnect the USB cable or disconnect the WT-1 from the camera
- Turn the camera off
- Operate camera controls
- Unplug or disconnect the AC adapter
- Remove the battery
- Subject the camera to powerful electromagnetic noise

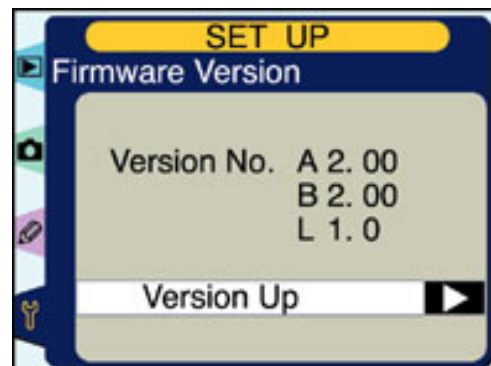
Any of the above actions could cause the camera or WT-1 to become inoperable.

- 1** Insert the memory card containing the firmware into the camera and turn the camera on.

- 2** Press the **MENU** button and select **Wireless LAN** from the camera setup menu. Confirm that **Off** is selected for **Transceiver** and press the multi selector left to return to the setup menu.



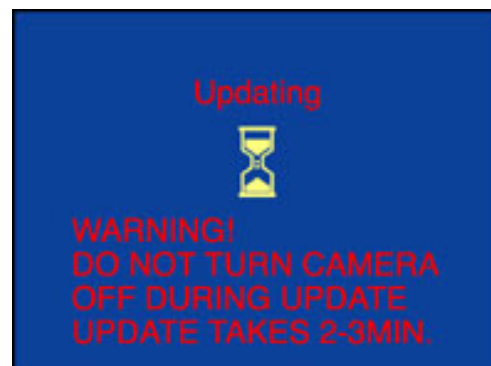
- 3** Select **Firmware Version** to display the current firmware version for the WT-1.



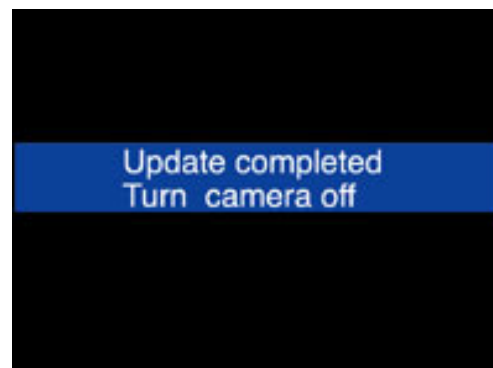
- 4** Press the multi selector right. A firmware update dialog will be displayed; highlight **Yes** and press the **ENTER** button to begin the update.



The message shown at right will be displayed while the update is in progress. From two to five minutes are required to complete the update.



The message shown at right will be displayed when the update is complete.

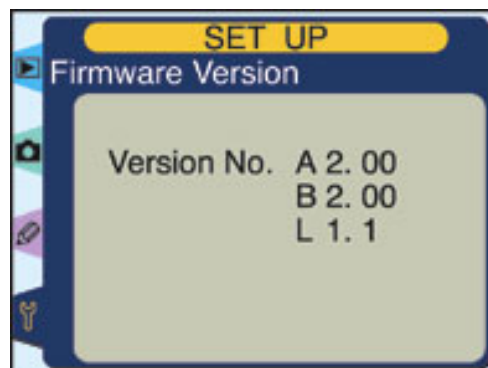


5

Confirm that the update was completed successfully.

5-1. Turn the camera off and remove the memory card.

5-2. Check the firmware version for the WT-1 as described in Step 2 , "Check the current firmware version." If the "L" firmware is version 1.1, the update was successful.



6

Format the memory card. See the **Guide to Digital Photography** for more information.

for

This completes the firmware update.