



Updating the Firmware for WR-R10 Wireless Remote Controllers

— Windows —

Thank you for choosing a Nikon product. This guide describes how to update the firmware for WR-R10 wireless remote controllers. ***If you are not confident that you can perform the update successfully, the update can be performed by a Nikon-authorized service representative.***

See the manual provided with your Nikon product for information on use.

Important

The product may be damaged if power is interrupted or the controls are operated during the update. Do not turn the product off, remove or disconnect the power source, or attempt to operate the product during the update. If the update is not completed successfully and the product becomes inoperable, take it to a Nikon-authorized service representative for inspection.



Get ready

To perform the update, you will need:

- A WR-R10 wireless remote controller
- A camera that can be used to update the WR-R10 firmware (a D7100 is used in this guide for illustrative purposes)
- A computer equipped with a card reader or card slot
- One of the following camera power sources:
 - An AC adapter
 - A fully-charged battery

- A Nikon-approved memory card that has been formatted in the camera (note that all data on the memory card will be deleted when the card is formatted; before formatting the card, back up any data you wish to keep to a computer or other device)
- The manuals for the camera and WR-R10

2

Check the current firmware version

The menus displayed on your camera may differ from those shown here.

- 1 Connect the WR-R10 to the camera.
- 2 Turn the camera on.
- 3 Press the camera **MENU** button to display the menus.
- 4 Select **Firmware version** in the setup menu.



- 5 The current firmware version will be displayed. Confirm that the firmware version is the correct version for this update.



"#.##" is the firmware version.

- 6 Exit to the setup menu and turn the camera off.

3

Download and extract the new firmware

- 1 Create a new folder on your computer.

If you are using Windows 8, select **Desktop** in the start screen to enter desktop mode.
- 2 Right-click the **I agree - Begin download** link on the download site and select **Save Target As**. Save the file to the folder created in Step 3-1.
- 3 Open the folder created in Step 3-1 and double-click the downloaded file ("F-WRR10-V####W.exe", where "####" is the firmware version) to extract the firmware to a sub-folder in the new folder.



The resulting file and folder hierarchy is shown below:



4

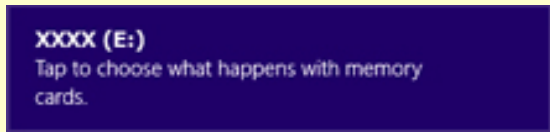
Copy the firmware to the memory card

The firmware can be copied to the camera memory card using a computer equipped with a card reader or card slot.

- 1 Insert a formatted memory card in the card reader or card slot. If an application such as Nikon Transfer 2 starts automatically, exit the application before proceeding.

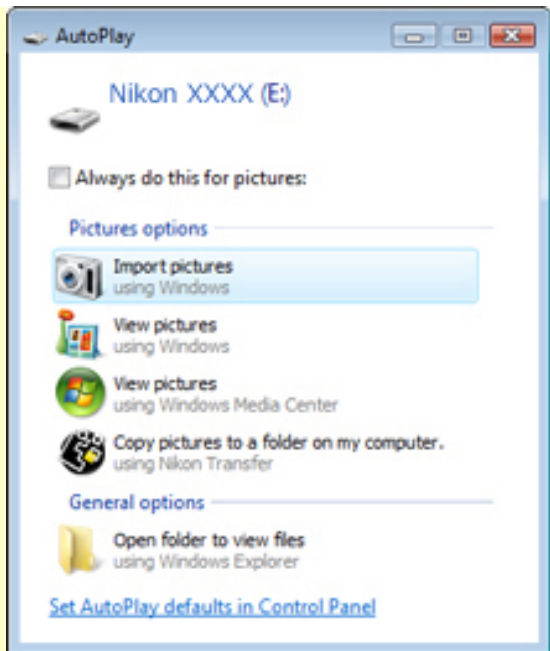
Windows 8

If Windows displays the message shown in the illustration, click **×** to close the dialog.



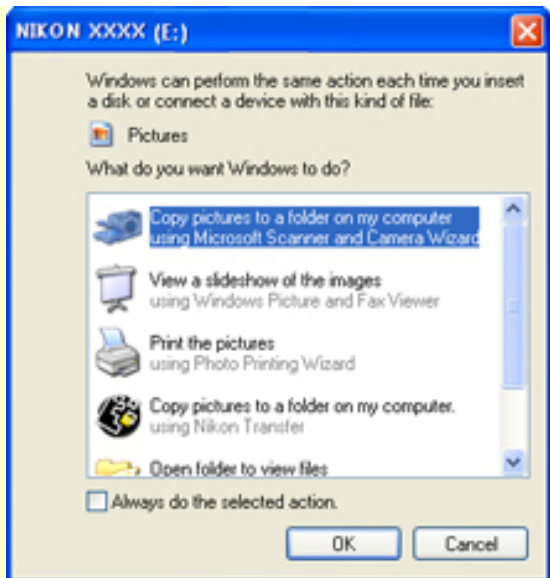
Windows 7/Windows Vista

Under Windows 7/Windows Vista, an AutoPlay dialog may be displayed. Click



Windows XP

Under Windows XP, a Removable Disk dialog may be displayed. Click **Cancel**.



2

Copy the "WRR10_####.bin" file to the memory card.



Windows 8

To have both the current folder (the folder containing the firmware update) and the memory card folder open at the same time, right-click the memory card icon in Explorer and select **Open in new window**.

When copying is complete, confirm that the memory card contains the file "WRR10_####.bin".

Important

Be sure to copy the "WRR10_####.bin" file to the root directory of the memory card. The camera will not recognize the new firmware if it is placed in a folder under the root directory.

- 3 If your computer shows the memory card as a removable disk, right-click the removable disk and select **Eject** from the menu that appears. Remove the memory card from the card reader or card slot.

5

Update the firmware

The menus displayed on your camera may differ from those shown here.

During the update, do not:

- Remove the memory card
- Turn the device off
- Operate device controls
- Attach or remove lenses or the WR-R10
- Unplug or disconnect the AC adapter
- Remove the battery
- Subject the devices to powerful electromagnetic noise

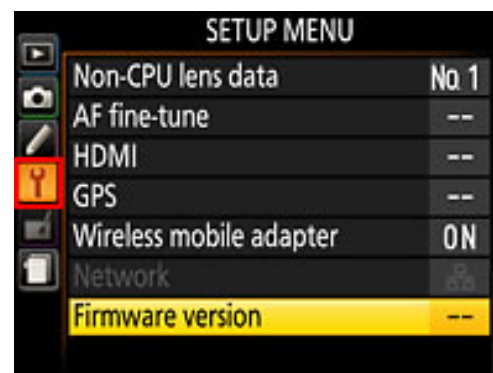
Any of the above actions could cause the devices to become inoperable.

- 1 Insert the memory card containing the firmware into the camera memory card slot.

Cameras with Two Memory Card Slots

If the camera allows you to select one slot as the primary slot and the other as the secondary slot, insert the card into the slot currently selected as the primary slot. Otherwise insert the card into Slot 1.

- 2 Connect the WR-R10 to the camera.
- 3 Turn the camera on.
- 4 Press the camera **MENU** button to display the menus.
- 5 Select **Firmware version** in the setup menu.



- 6 The current firmware version will be displayed. Highlight **Update** and press the **OK**.



- 7 A firmware update dialog will be displayed. Select **Yes**.



- 8 The update will begin. Follow the on-screen instruction during the update.

9

Confirm that the update was completed successfully.

9-1. Turn the camera off and remove the memory card.

9-2. Check the camera firmware version as described in Step 2, "Check the current firmware version".

9-3. If the updated version is displayed, the update was successful.



"#.##" is the firmware version.

If the update was not successful, contact a Nikon service representative.

10

Format the memory card in the camera.

This completes the firmware update.