

Important

The camera or SB-900 may be damaged if power is interrupted any operations are performed during the update. Do not turn the camera or SB-900 off, remove or disconnect the power source, or operate the camera or SB-900 during the update. If the update is not completed successfully and the camera or SB-900 becomes inoperable, take the device to a Nikon-authorized service representative for inspection.

1 Get ready

To upgrade the SB-900 firmware, you will need:

- An SB-900 Speedlight
- A camera that supports the SB-900 (the D3 is used as an example in this guide)
- Card reader and the computer
 - * For the camera equipped with Mass Storage, choosing **Mass Storage** from **USB** option allows you to connect the camera to the computer by using the USB cable.
- Either of the following power sources for the camera and SB-900:
 - An AC adapter
 - Fully charged battery
- A Nikon-approved memory card that has been formatted in the camera.
 - * All data in memory card get erased when it is initialized. Please copy all necessary data in the card (e.g. in the computer) before initializing the memory card. Do not use Microdrive cards.
- Manuals for the camera and SB-900

2 Check the current SB-900 firmware version

- 1 Press the [OK] button for approx. one second to display the custom setting.



- 2 Rotate the selector dial to choose **Version of firmware**, and press the [OK] button.



- 3 The current firmware version will be displayed. This upgrade can be used with firmware version 5.01.

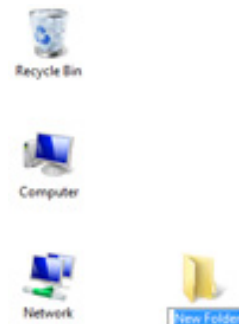


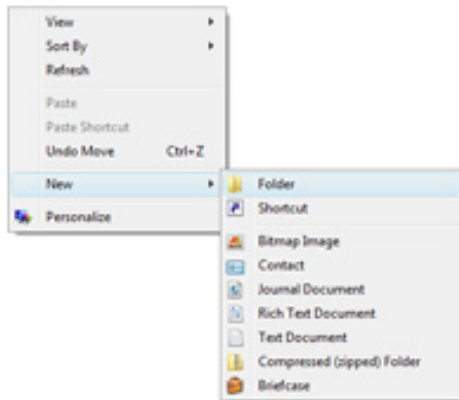
- 4 Turn the SB-900 off.

3

Download and extract the new firmware

- 1 Right-click an empty area of the desktop and select **New > Folder** from the menu that appears. Name the folder as desired.



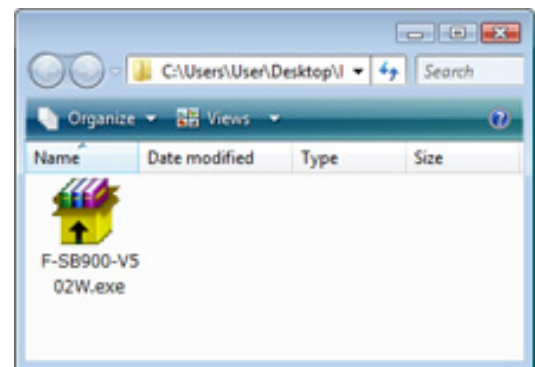


2

Right-click the **I agree - Begin download** link on the download site and select **Save Target As**. Save the file to the folder created in Step 3-1.

3

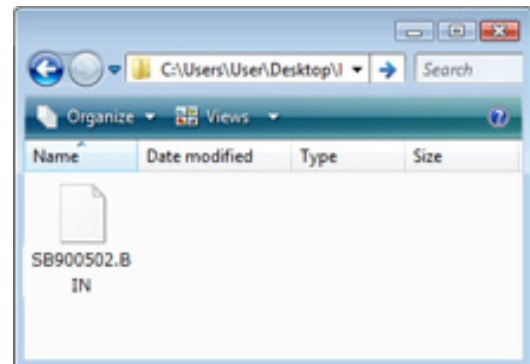
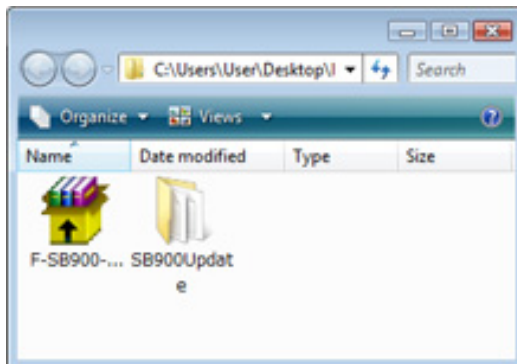
Open the folder created in Step 3-1 and double-click **F-SB900-V502W.exe**.



The following files will be extracted to a "SB900Update" folder in the new folder:

SB900502.BIN

Firmware for the SB-900



"SB900Update" folder

4


Copy the firmware to the memory card

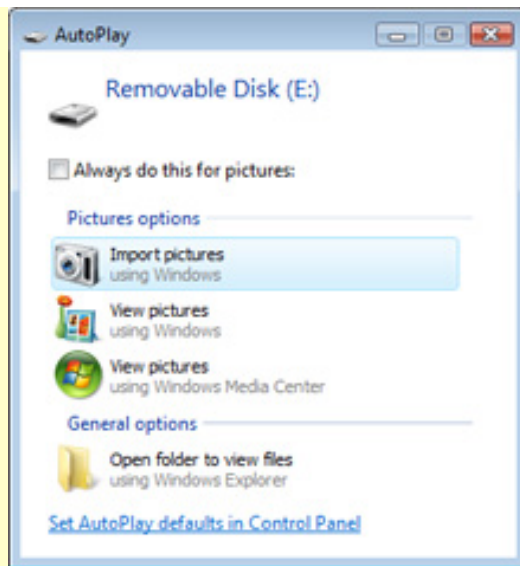
To copy the firmware to the memory card, a computer is used.

1 Connect the card reader to the computer and insert a formatted memory card.

- If Nikon Transfer is installed, it will start automatically; to exit, select **Exit** from the **File** menu.

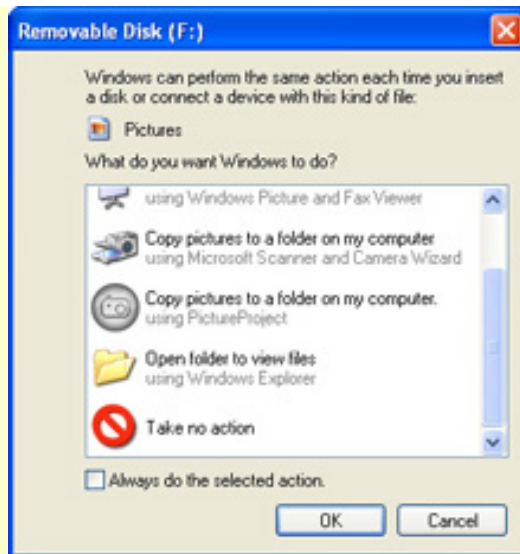
Windows Vista

Under Windows Vista, an AutoPlay dialog may be displayed. Click .

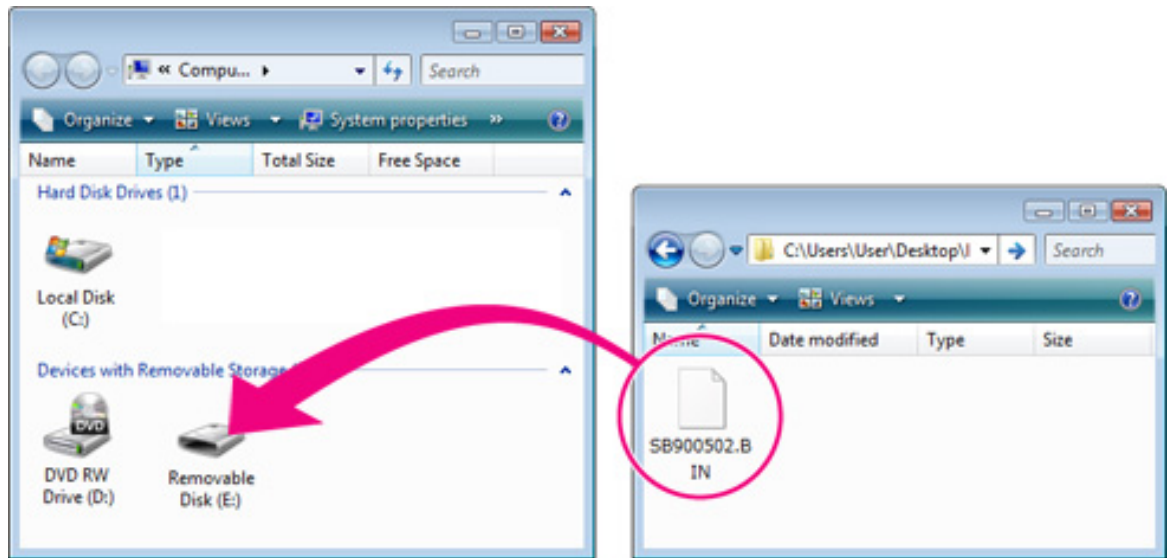


Windows XP

Under Windows XP, a Removable Disk dialog may be displayed. Click **Cancel**.



2 The memory card will appear in "Computer" (Windows Vista) or "My Computer" (Windows XP) as a removable disk. Copy "SB900502.BIN" from the "SB900Update" folder to this removable disk.



Drive letters may differ

When copying is complete, double-click the removable disk and confirm that the file has been copied successfully.

- 3 Right click the removable disk and select **Eject** from the menu that appears. Remove the memory card from the card reader.

Important

Be sure to copy the firmware to the root directory of the memory card. The camera will not recognize the new firmware if it is placed in a folder under the root directory.

5

Update the SB-900 firmware

During the update, do not:

- Remove the memory card
- Turn the camera or SB-900 off
- Operate any camera or SB-900 controls
- Attach or remove lenses
- Unplug or disconnect the AC adapter
- Remove the battery
- Subject the camera to powerful electromagnetic noise

Any of the above actions could cause the camera or SB-900 to become inoperable.

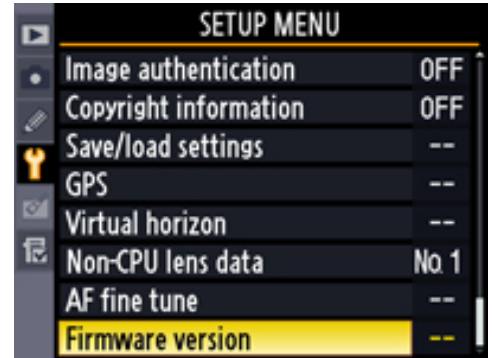
- 1 Insert the memory card containing the firmware into slot 1.

Important

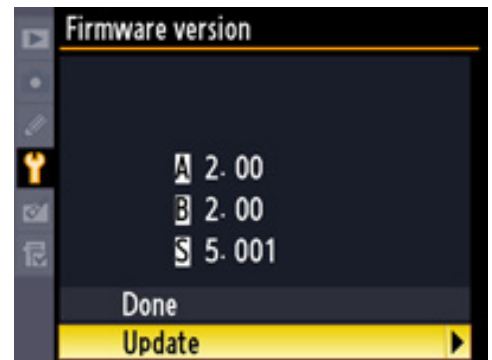
Do not insert the memory card into slot 2.

2 Mount the SB-900 on the camera and turn both devices on.

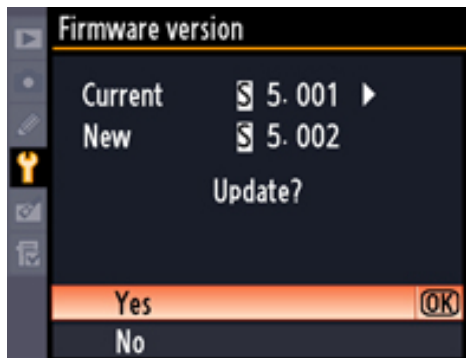
3 Press the **MENU** button and select **Firmware version** in the setup menu.



4 The current versions of the camera and SB-900 firmware will be displayed. Highlight **Update** and press the multi selector to the right.



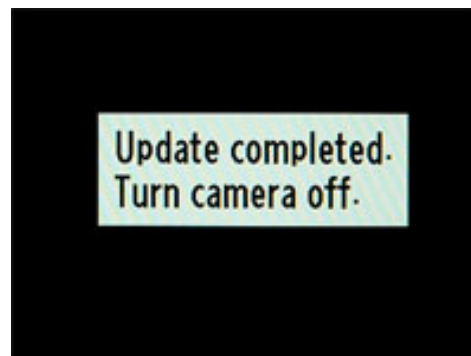
5 Highlight **Yes** and press **OK** to begin the update.



- 6** The update may take anywhere from one to two minutes.



The message shown at right will be displayed when the update is complete.



- 7** Confirm that the update was completed successfully.

7-1. Turn the camera and SB-900 off and remove the memory card from the camera.

7-2. Check the SB-900 firmware version as described in **Step2**, "Check the current SB-900 firmware version".

7-3. If the version displayed is 5.02, the update was successful.



- 8** **Format the memory card.**

This completes the firmware update.