



Upgrading the Firmware for the COOLPIX P5100

Windows



Thank you for choosing a Nikon product. This guide describes how to upgrade the firmware for the COOLPIX P5100 digital camera.

If you are not confident that you can perform the update successfully, the update can be performed by a Nikon service representative.

1

Get ready

To upgrade the camera firmware, you will need:

- The camera

- A computer equipped with an SD card reader or card slot

- One of the following power sources:

 - An EH-62A AC adapter

 - A fully-charged EN-EL5 rechargeable Li-ion battery

- A Nikon-approved memory card that has been formatted in the camera

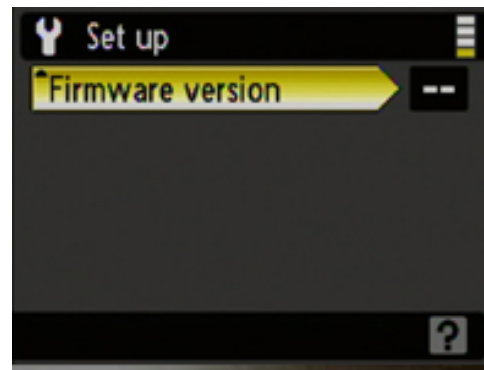
The camera ***Guide to Digital Photography***

2

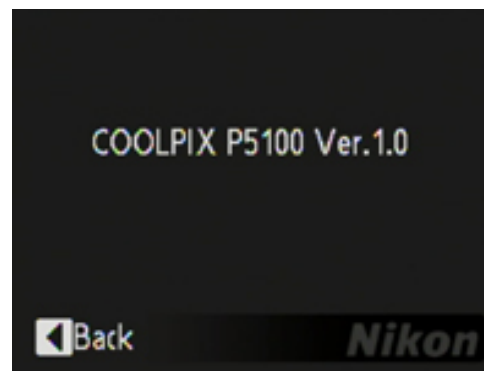
Check the current camera firmware version

1 Rotate the mode dial to **SETUP** and turn the camera on.

2 The setup menu will be displayed in the camera monitor. Select **Firmware version**.



3 The current firmware version will be displayed. This upgrade can be used with firmware version 1.0.

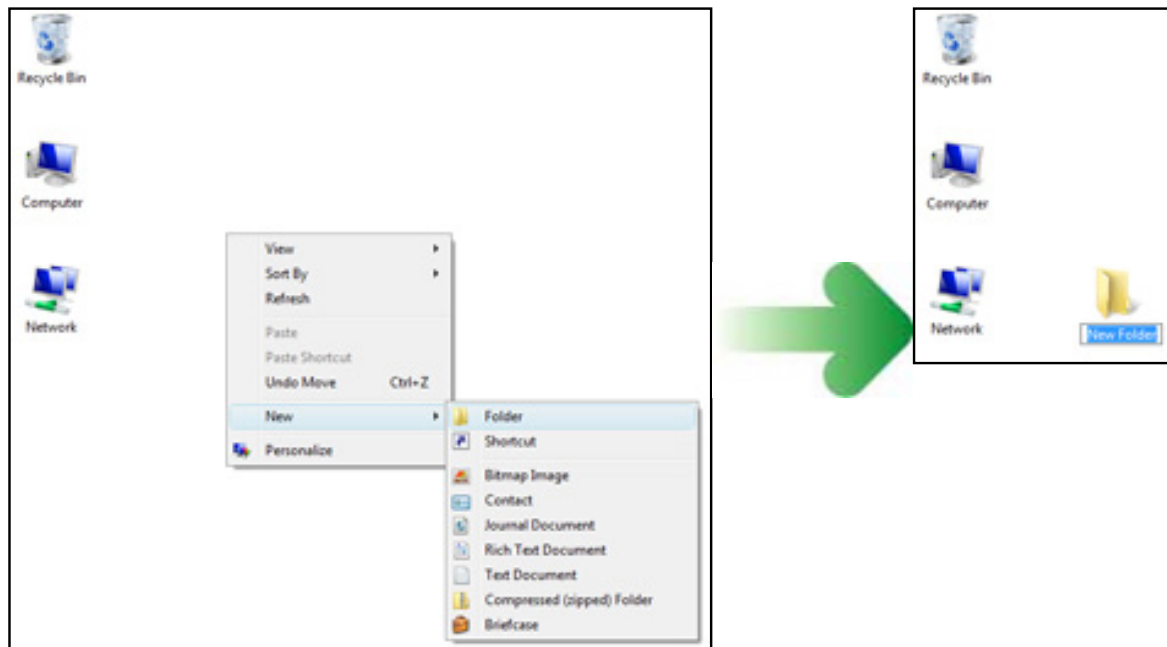


4 Exit to the setup menu and turn the camera off.

3

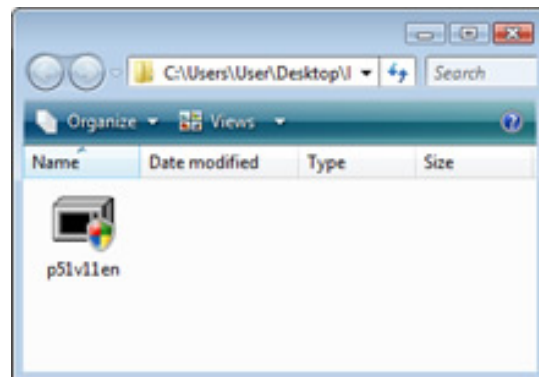
Download and extract the new firmware

1 Right-click an empty area of the desktop and select **New > Folder** from the menu that appears. Name the new folder as desired.

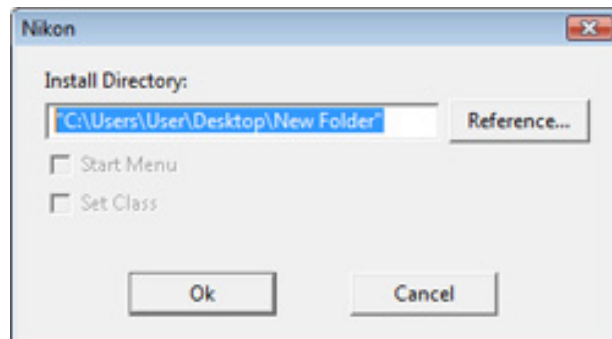


2 Right-click the **p51v11en.exe** link on the download site and select **Save Target As**. Save the file to the folder created in Step 3-1.

3 Open the folder created in Step3-1 and double-click the downloaded file.

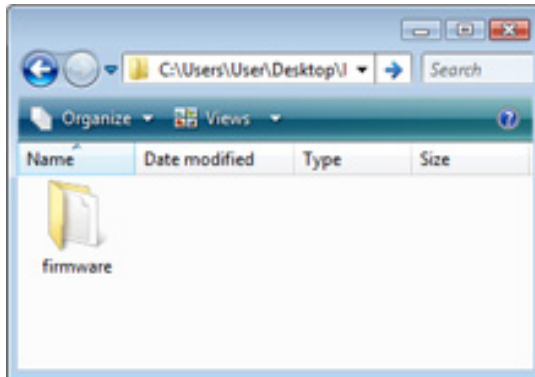
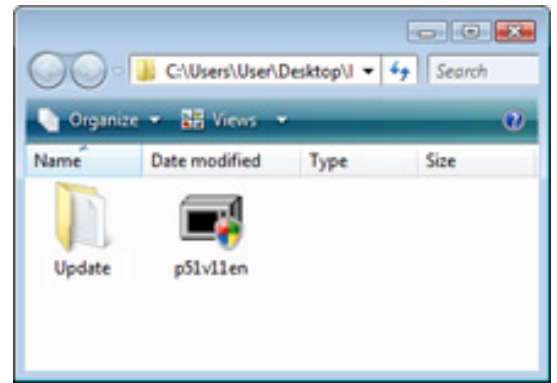


A dialog similar to that shown at right will be displayed; click **OK** to extract the following files to an "Update" folder in the new folder:

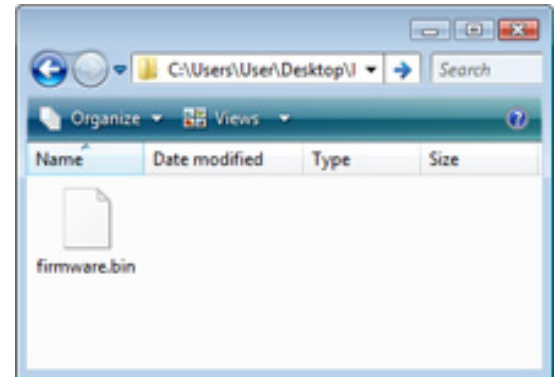


firmware: Folder containing camera firmware

firmware.bin: Camera firmware (in "firmware" folder)



"Update" folder



"firmware" folder


4

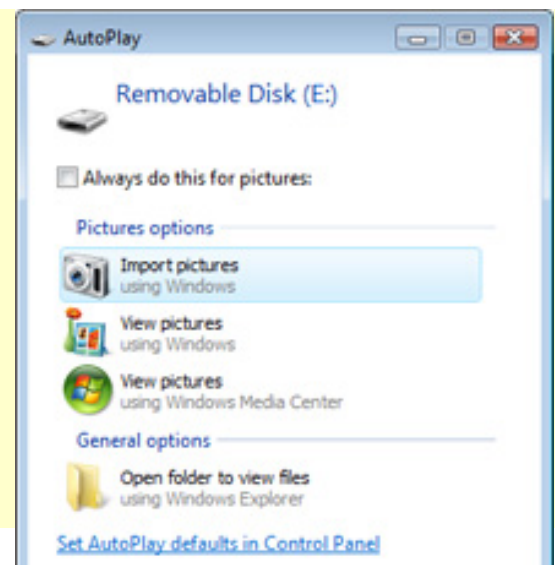
Copy the firmware to the memory card

The firmware can be copied to the camera memory card using a computer equipped with an SD card reader or card slot.

- 1 Connect the card reader to the computer and insert a formatted memory card. If Nikon Transfer is installed, it may start automatically; select **Exit** from the **File** menu to exit Nikon Transfer.

Windows Vista

Under Windows Vista, an AutoPlay dialog may be displayed. Click .



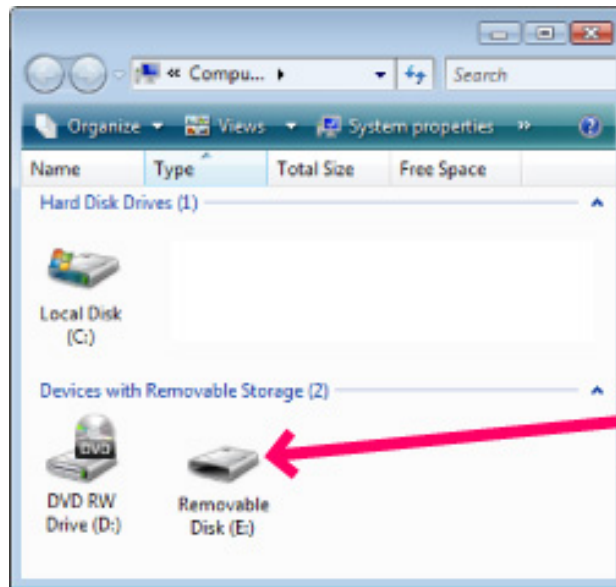
Windows XP

Under Windows XP, a Removable Disk dialog may be displayed. Click **Cancel**.

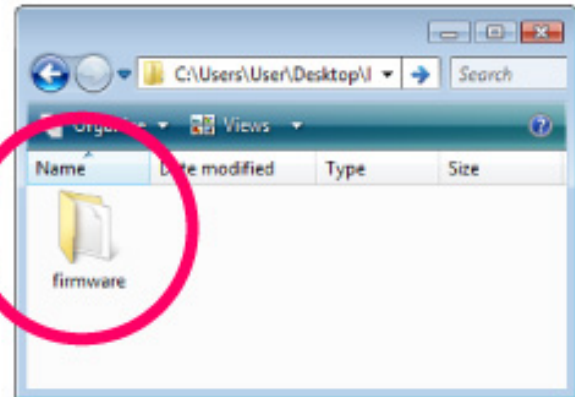


2

The memory card will appear in "Computer" (Windows Vista) or "My Computer" (Windows XP) as a removable disk. Copy the "firmware" folder from the "Update" folder to the removable disk.



Drive letters may differ



"Update" folder

When copying is complete, open the "firmware" folder on the removable disk and confirm that it contains the file "firmware.bin".

3

Right click the removable disk and select **Eject** from the menu that appears. Remove the memory card from the card reader.

5

Update the camera firmware

During the update, do not:

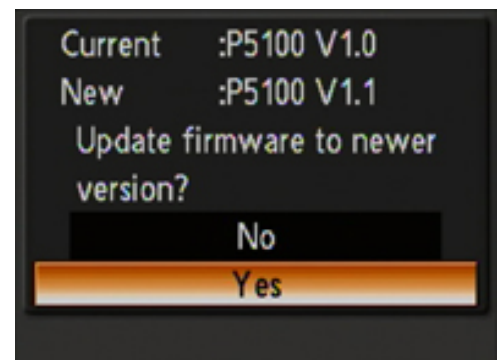
- Remove the memory card
- Turn the camera off
- Unplug or disconnect the AC adapter
- Remove the battery
- Subject the camera to powerful electromagnetic noise

Any of the above actions could cause the camera to become inoperable.

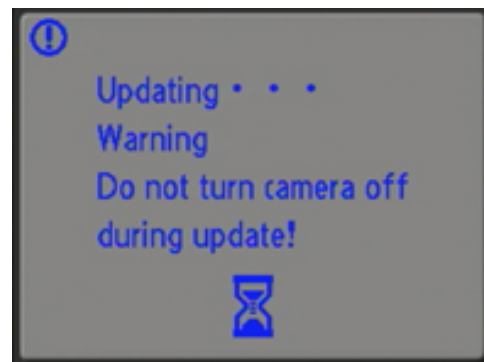
- 1** Insert the memory card containing the firmware into the camera memory card slot.
- 2** Rotate the mode dial to **SETUP** and turn the camera on.
- 3** The setup menu will be displayed in the camera monitor. Select **Firmware version**.



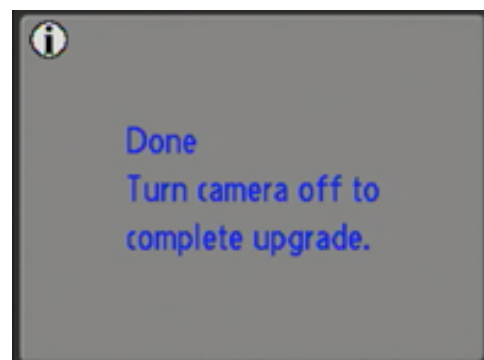
- 4** A firmware update dialog will be displayed. Select **Yes** and press the center of the **OK** button at the center of the multi selector to begin the update.



The message shown at right will be displayed while the update is in progress.



The message shown at right will be displayed when the update is complete.



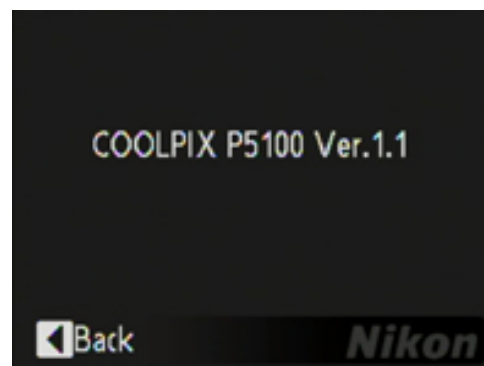
5

Confirm that the update was completed successfully.

5-1. Turn the camera off and remove the memory card.

5-2. Check the camera firmware version as described in Step2, "Check the current camera firmware version".

5-3. If the version displayed is 1.1, the update was successful.



If the update was not successful, contact a Nikon service representative.

6

Format the memory card.

This completes the firmware update.