

Upgrading the COOLPIX 3200 Firmware



— Windows —

Thank you for choosing a Nikon product. This guide describes how to upgrade the camera firmware for the COOLPIX 3200. If you are not confident that you can perform the update successfully, the update can be performed by a Nikon service representative.

1

Get ready

To upgrade the firmware for the COOLPIX 3200, you will need:

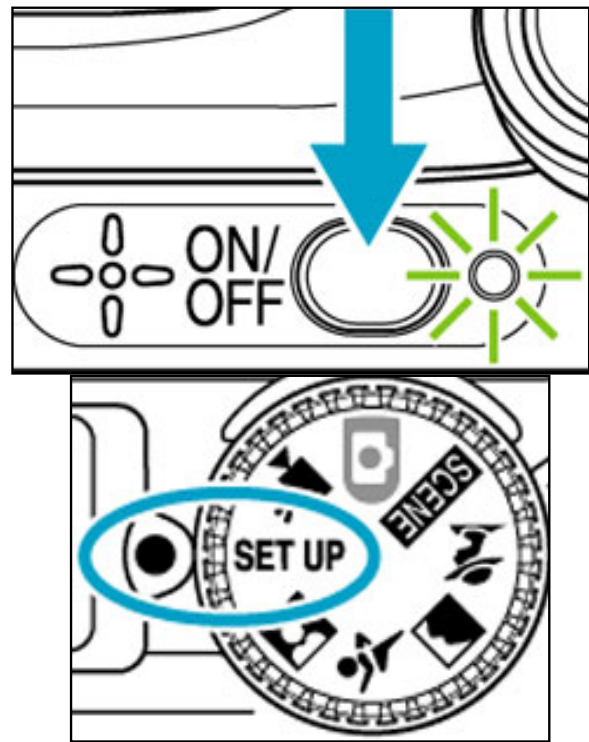
- A COOLPIX 3200 digital camera
- A UC-E6 USB cable or a Secure Digital (SD) card reader
- One of the following power sources:
 - An EH-62B AC adapter kit
 - Two fully-charged EN-MH1 rechargeable batteries
 - A new CRV3 battery
- A Nikon-approved SD memory card that has been formatted in the COOLPIX 3200
- The ***Nikon Guide to Digital Photography for the COOLPIX 3200***

2

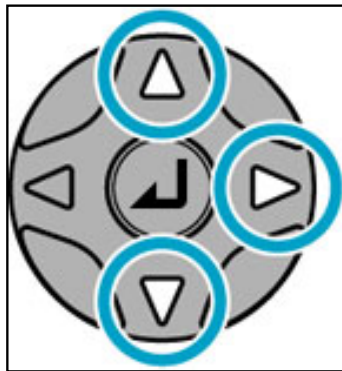
Check the current firmware version for the COOLPIX 3200

1

Rotate the mode dial to **SET UP** and turn the camera on.



- 2** The setup menu will be displayed in the camera monitor. Press the multi selector up or down to highlight **Firmware version** and press the multi selector to the right.



- 3** "E3200 Ver. *.*" will be displayed in the monitor, followed by the version number of the current camera firmware.
If the monitor shows "E3200 Ver.1.1," the current camera firmware is version 1.1. This upgrade can be used with firmware versions 1.1 or earlier.



- 4** Press the multi selector to the left to return to the setup menu.

5 Turn the camera off.

3

Download and extract the new firmware

1 Create a new folder on the hard disk and name it as desired.

Position the mouse cursor over an empty space on the desktop and click the right mouse button. Select **New > Folder** to create a new folder on the desktop. Name the folder as desired.

2 Download the file "CP3200fw12.zip" to the new folder.

Position the mouse cursor over the "**Click here to Agree to Licenses and Start Download**" link on the download site (above) and click the right mouse button. Select **Save target to file** and choose the folder created in step 3 -1. The file "CP3200fw12.zip" will be downloaded to the new folder.

3 Extract the firmware update.
In Windows XP, right click on the "CP3200fw12.zip" folder and choose "Extract All..."

Other versions of Windows - for general instructions on downloading and installing.

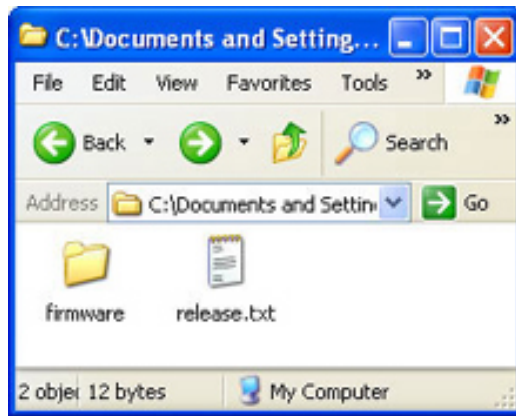
If installation is completed successfully, the folder "E3200 Update" will be created in the new folder.

If installation is completed successfully, the folder "E3200Update" will be created in the new folder. The folder "E3200Update" will contain the following files and folders:

release.txt: Details the changes made with the release of firmware version 1.2

firmware: Folder containing camera firmware

firmware.
bin: Camera firmware (in "firmware" folder)



"E3200 Update" folder



"firmware" folder

4

Copy the firmware to the memory card

The firmware can be copied to the camera memory card either by connecting the computer directly to the COOLPIX 3200 using the USB cable, or by removing the memory card from the camera and inserting it in an SD card reader.

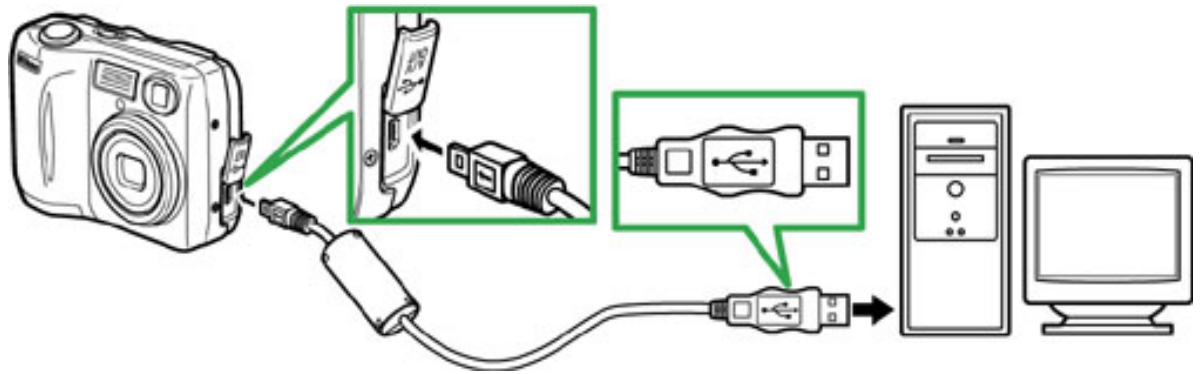
Direct USB Connection

- 1 Turn the camera off and insert the formatted memory card into the COOLPIX 3200. For information on formatting memory cards, see the ***Nikon Guide to Digital Photography with the COOLPIX 3200***.

- 2 Set the **USB** option in the camera setup menu to **Mass Storage**. Rotate the camera mode dial to **SET UP** and set the **USB** option to **Mass storage**.



- 3 Turn the camera off and connect the USB cable as shown below.



UC-E6 USB cable

4

Turn the camera on.*

- **If Nikon View is installed**

Nikon Transfer will start automatically and display the message, "Camera or card contains no images. Nikon View will now terminate." Click **OK** to exit Nikon Transfer.

- **If PictureProject is installed**

PictureProject Transfer will start automatically. Click **Cancel**.

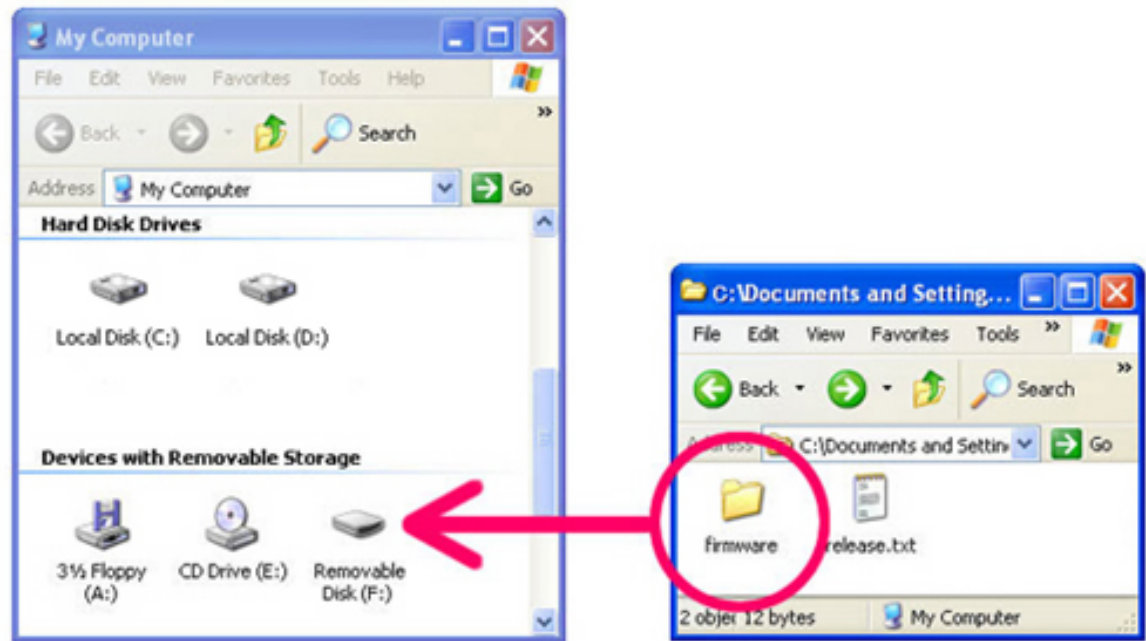
- * Under Windows XP, a Removable Disk dialog similar to that shown at right may be displayed. Select **Take no action** and click **OK**.



5

Copy the firmware to the memory card.

- 5-1. Copy the firmware to the removable disk corresponding to the camera.
When the camera is connected and turned on, a new "Removable Disk" icon will be displayed in My Computer. Copy the "firmware" folder from the "E3200Update" folder to this removable disk. ;



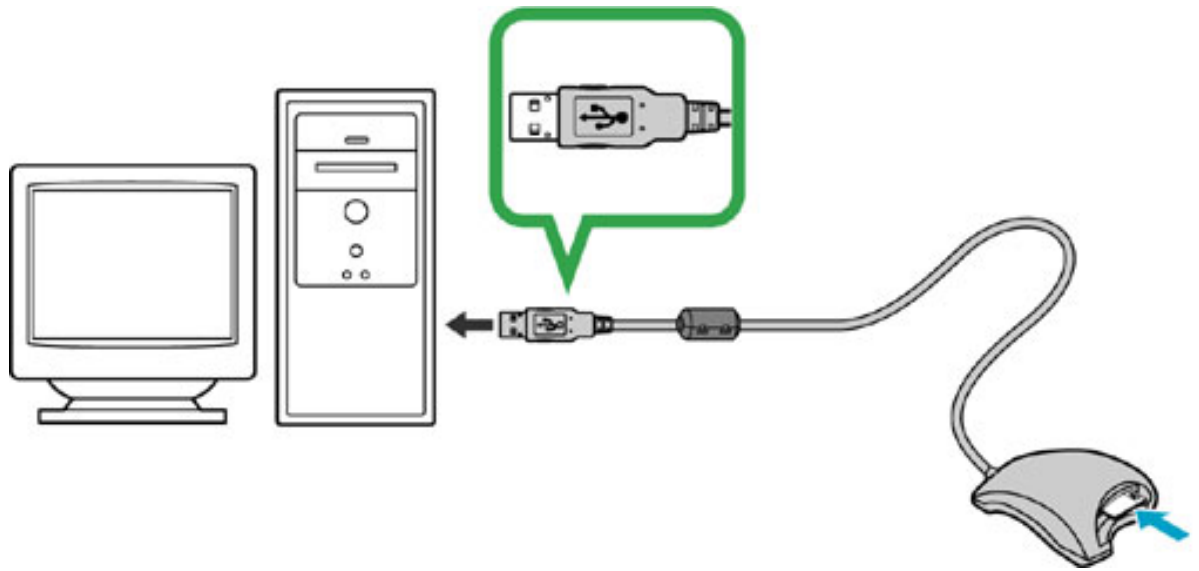
Drive letters may differ

5-2. When copying is complete, check the contents of the removable disk.
Open the "firmware" folder on the removable disk and confirm that it contains the file "firmware.bin."

6 Disconnect the camera.
For information on disconnecting the camera, see the **Nikon Guide to Digital Photography for the COOLPIX 3200**

SD Card Reader

1 Connect the card reader to the computer.
For more information, see the documentation provided with the card reader.



2

Insert the formatted memory card into the card reader.*

- **If Nikon View is installed**
Nikon Transfer will start automatically and display the message, "Camera or card contains no images. Nikon View will now terminate." Click **OK** to exit Nikon Transfer.
- **If PictureProject is installed**
PictureProject Transfer will start automatically. Click **Cancel**.

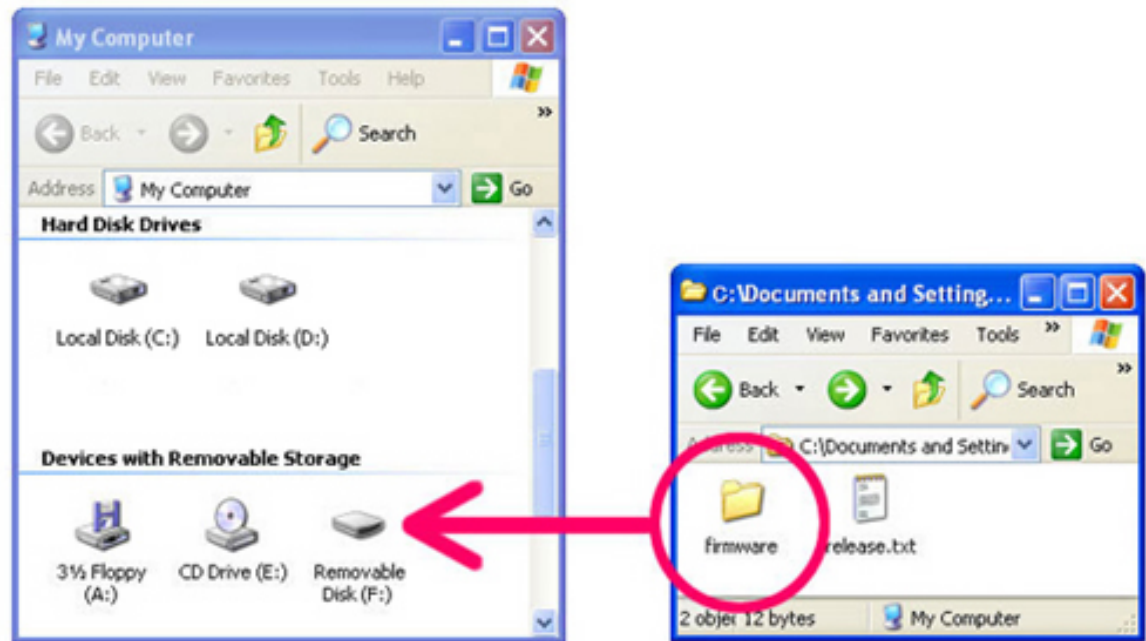
- * Under Windows XP, a Removable Disk dialog similar to that shown at right may be displayed. Select **Take no action** and click **OK**.



3

Copy the firmware to the memory card.

- 3-1. Copy the firmware to the removable disk corresponding to the memory card. When the memory card is inserted, a new "Removable Disk" icon will be displayed in My Computer. Copy the "firmware" folder from the "E3200Update" folder to this removable disk.



Drive letters may differ

- 3-2. When copying is complete, check the contents of the removable disk.
Open the "firmware" folder on the removable disk and confirm that it contains the file "firmware.bin."
- 3-3. Remove the memory card.
Right click on the removable disk and select **Eject** from the menu that appears.
Remove the memory card from the card reader.

- 4 Disconnect the card reader.
For more information, see the documentation provided with the card reader.

5 Update the camera firmware

Performing any of the following actions during the update could cause the COOLPIX 3200 to become inoperable:

- Removing the memory card
- Turning the camera off
- Unplugging or disconnecting the AC adapter
- Removing the battery
- Subjecting the camera to powerful electromagnetic noise

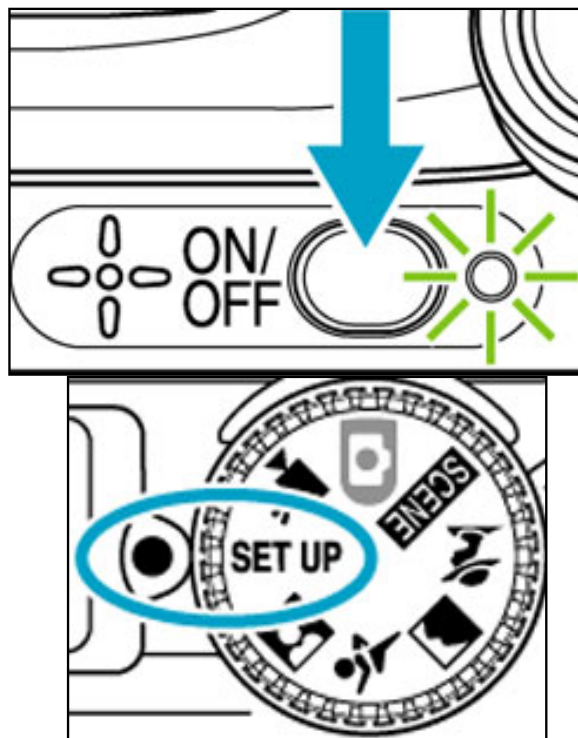
If you are not confident that you can perform the update successfully, the update can be performed by a Nikon service representative.

Insert the memory card containing the firmware into the COOLPIX 3200.

1

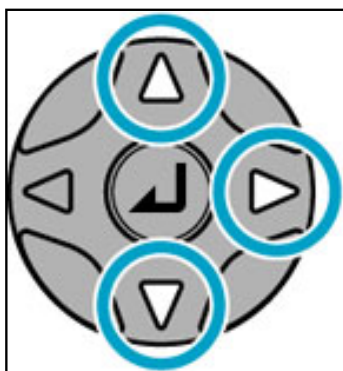
2

Rotate the mode dial to **SET UP** and turn the camera on.



3

The setup menu will be displayed in the camera monitor. Press the multi selector up or down to highlight **Firmware version** and press the multi selector to the right.



4

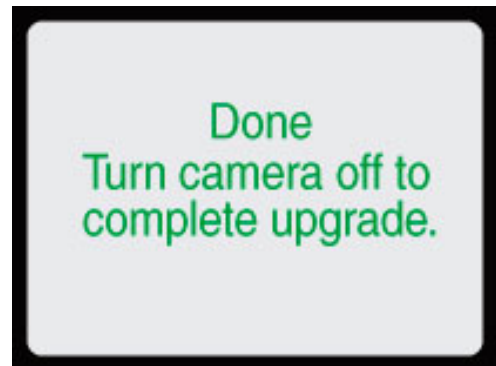
A firmware update dialog will be displayed. Press the multi selector down to highlight **Yes**, then press the center of the multi selector to begin the update.



- 5** The message as shown at right will be displayed while the update is in progress.



- 6** The message as shown at right will be displayed when the update is complete.



- 7** Confirm that the update was completed successfully.
 7-1. Turn the camera off and remove the memory card.
 7-2. Check the camera firmware version as described in **Step 2, "Check the current firmware version for the COOLPIX 3200"**.
 7-3. If "E3200 Ver.1.2" is displayed in the monitor, the update was successful.



If the update was not successful, contact a Nikon service representative.

- 8** **Format the memory card.**
 For information on formatting memory cards, see the *Nikon Guide to Digital Photography with the COOLPIX 3200*.

9

Restore the **USB** option to its original setting.

If you changed the **USB** setting from **PTP** to **Mass Storage** to update the camera firmware, return to the **USB** menu and select **PTP**. See the ***Nikon Guide to Digital Photography with the COOLPIX 3200*** for details.

This completes the firmware update.