



Upgrading the Firmware for the D200

Windows

Thank you for choosing a Nikon product. This guide describes how to upgrade the camera firmware for the D200. If you are not confident that you can perform the update successfully, the update can be performed by a Nikon-authorized service representative.

The D200 has two sets of firmware, A and B, which must be updated separately. After updating the A firmware, repeat steps 4–5, below, to upgrade the B firmware.

Important

The camera may be damaged if power is interrupted or camera controls are operated during the update. Do not turn the camera off, remove or disconnect the power source, or operate camera controls during the update. If the update is not completed successfully and the camera becomes inoperable, take the camera to a Nikon-authorized service representative for inspection.



Get ready

To upgrade the camera firmware, you will need:

- The camera

- A UC-E4 USB cable or a memory card reader (do not use JumpShot cables provided with Lexar Media cards)

- One of the following power sources:

 - An EH-6 AC adapter

 - A fully-charged EN-EL3e rechargeable Li-ion battery

A Nikon-approved memory card that has been formatted in the camera (note that all data on the memory card will be deleted when the card is formatted; before formatting the card, back up any data you wish to keep to a computer or other device). Do not use Microdrive cards.

The camera ***Guide to Digital Photography***

2

Check the current camera firmware version

- 1 Turn the camera on.
- 2 Press the **MENU** button and select **Firmware Version** in the setup menu.
* Illustration shows dialog displayed when both A and B firmware have been updated to version 2.00 or later.
- 3 Two firmware versions (A and B) will be displayed. Both should be earlier than 2.00.

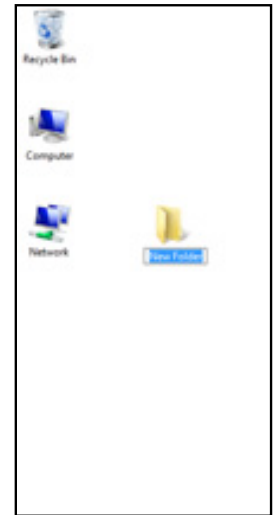
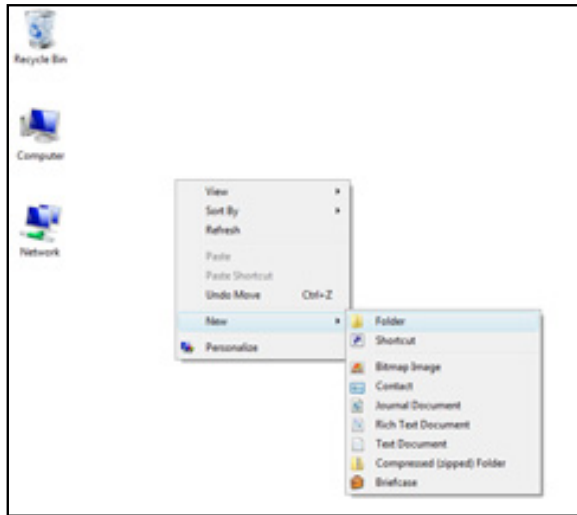


- 4 Turn the camera off.

3

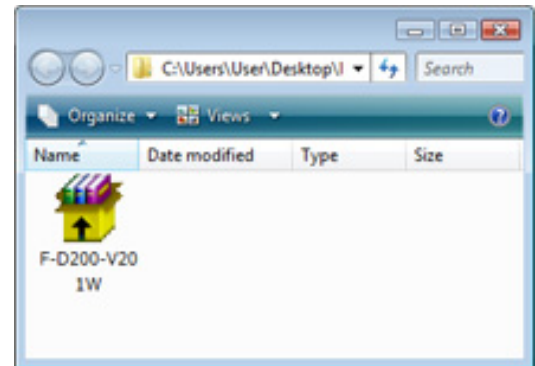
Download and extract the new firmware

- 1 Right-click an empty area of the desktop and select **New > Folder** from the menu that appears. Name the folder as desired.



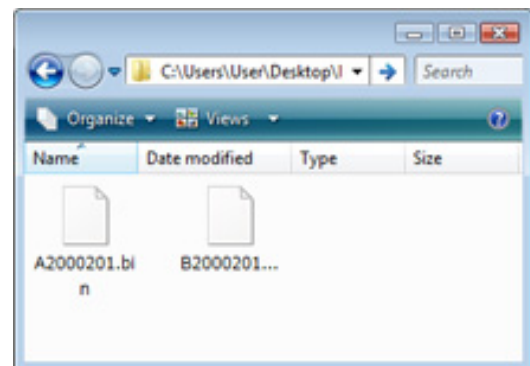
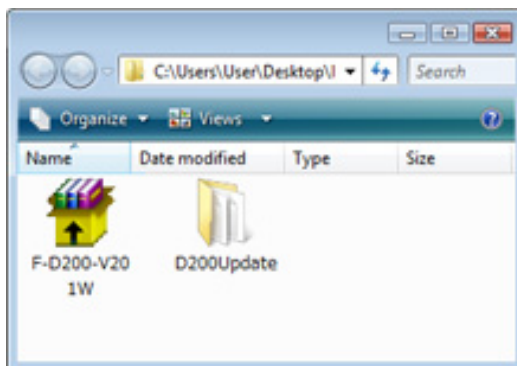
2 Right-click the **I agree - Begin download** link on the download site and select **Save Target As**. Save the file to the folder created in Step 3-1.

3 Open the folder created in Step 3-1 and double-click **F-D200-V201W.exe**.



The following files will be extracted to a "D200Update" folder in the new folder:

A2000201.bin	Camera A firmware
B2000201.bin	Camera B firmware



D200Update folder

4

Copy the firmware to the memory card

The firmware can be copied to the camera memory card either by connecting the computer directly to the camera using the USB cable, or by removing the memory card from the camera and inserting it in a card reader.

Important

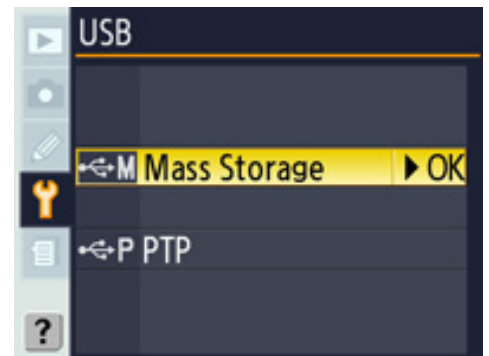
Only one of the two sets of firmware (A or B) can be updated at a time. Use separate memory cards for each set of firmware, or update firmware A as described below, then format the memory card and repeat the process for firmware B.

Direct USB Connection

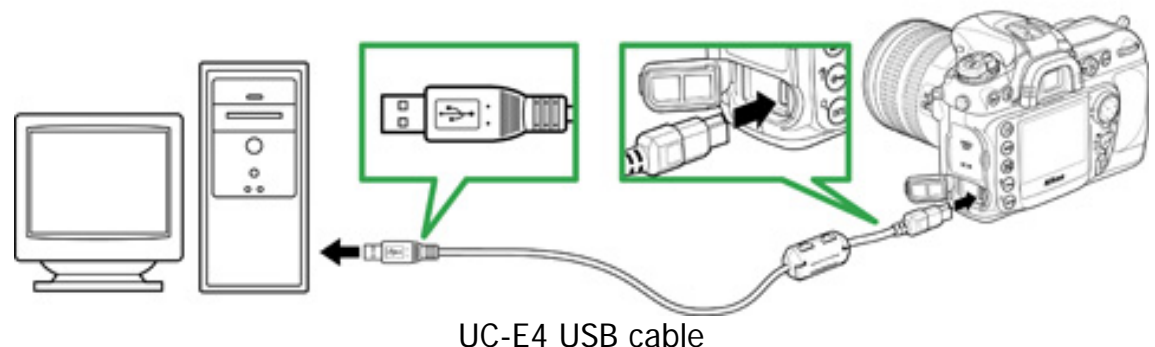
Note: Use the EH-6 AC adapter or a fully-charged EN-EL3e rechargeable Li-ion battery.

1 Turn the camera off and insert a formatted memory card. For information on formatting memory cards, see the camera *Guide to Digital Photography*

2 Press the **MENU** button, select the setup menu, and set the **USB** option to **Mass Storage**.



3 Turn the camera off and connect the USB cable as shown below.



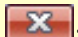
UC-E4 USB cable

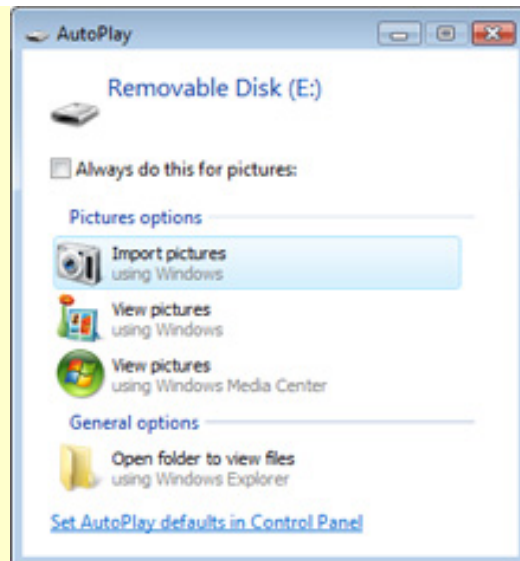
Turn the camera on.

4 If Nikon Transfer is installed, it will start automatically; to exit, select **Exit** from the **File** menu.

If PictureProject is installed, it will start automatically; click **Cancel** to exit.

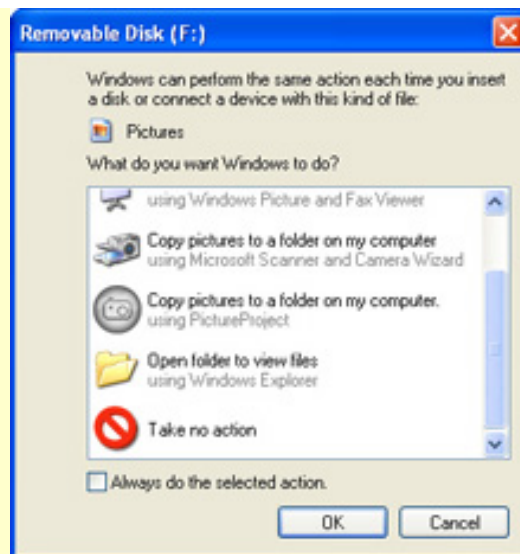
Windows Vista

Under Windows Vista, an AutoPlay dialog may be displayed. Click .

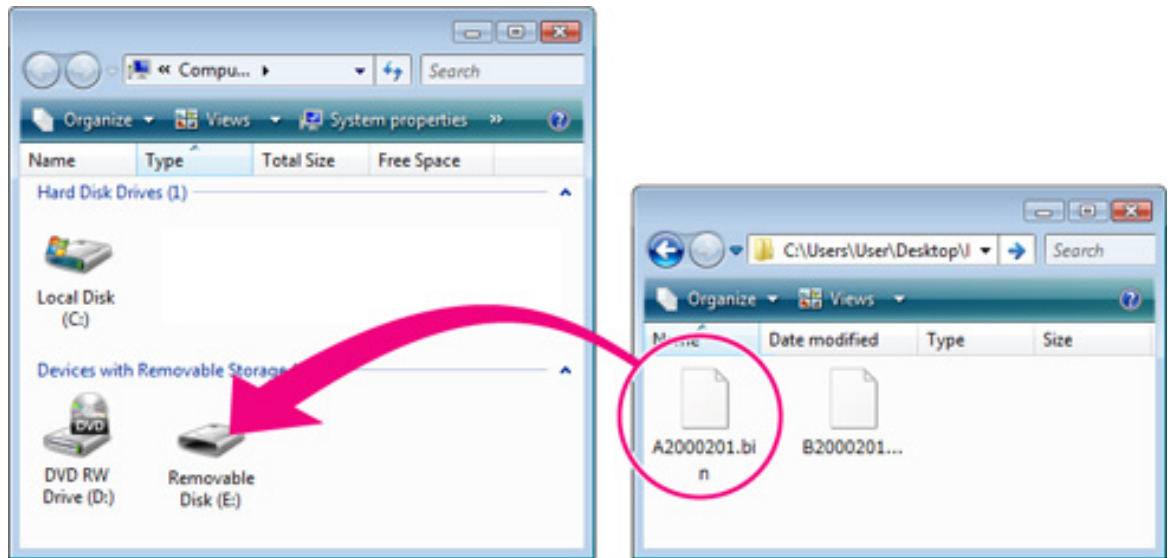


Windows XP

Under Windows XP, a Removable Disk dialog may be displayed. Click **Cancel**.



5 The camera will appear in "Computer" (Windows Vista) or "My Computer" (Windows XP) as a removable disk. Copy "A2000201.bin" (A firmware) or "B2000201.bin" (B firmware) from the "D200Update" folder to this removable disk.



Drive letters may differ

Illustration shows A firmware

When copying is complete, double-click the removable disk and confirm that the file has been copied successfully.

- 6 Disconnect the camera from the computer.
For more information, see the **Guide to Digital Photography**

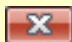
Important

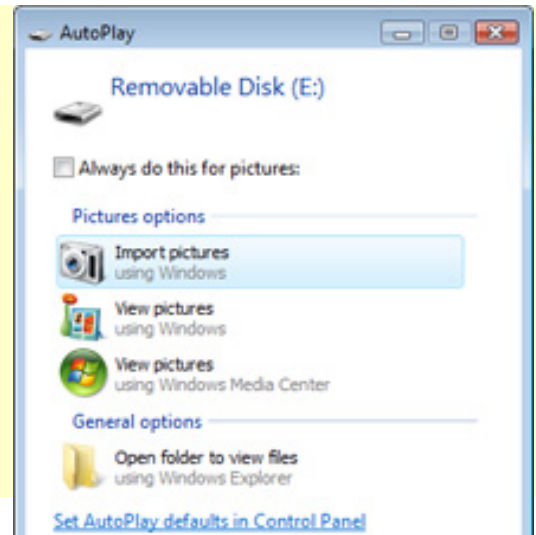
Be sure to copy the firmware to the root directory of the memory card. The camera will not recognize the new firmware if it is placed in a folder under the root directory.

Card Reader

- 1 Connect the card reader to the computer and insert a formatted memory card.
If Nikon Transfer is installed, it will start automatically; to exit, select **Exit** from the **File** menu.
If PictureProject is installed, it will start automatically; click **Cancel** to exit.

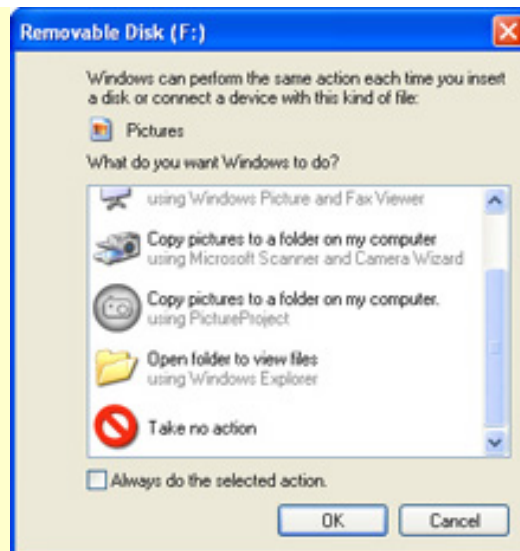
Windows Vista

Under Windows Vista, an AutoPlay dialog may be displayed. Click .



Windows XP

Under Windows XP, a Removable Disk dialog may be displayed. Click **Cancel**.



- 2 The memory card will appear in "Computer" (Windows Vista) or "My Computer" (Windows XP) as a removable disk. Copy the firmware to the removable disk as described in Step5 of "Direct USB Connection."
- 3 Right click the removable disk and select **Eject** from the menu that appears. Remove the memory card from the card reader.

Important

Be sure to copy the firmware to the root directory of the memory card. The camera will not recognize the new firmware if it is placed in a folder under the root directory.

5

Update the camera firmware

During the update, do not:

- Remove the memory card
- Turn the camera off
- Operate any of the camera controls
- Attach or remove lenses
- Unplug or disconnect the AC adapter
- Remove the battery
- Subject the camera to powerful electromagnetic noise

Any of the above actions could cause the camera to become inoperable.

1 Insert the memory card containing the firmware into the camera.

2 Turn the camera on.

3 Press the **MENU** button and select **Firmware Version** in the setup menu.

* Illustration shows dialog displayed when both A and B firmware have been updated to version 2.00 or later.

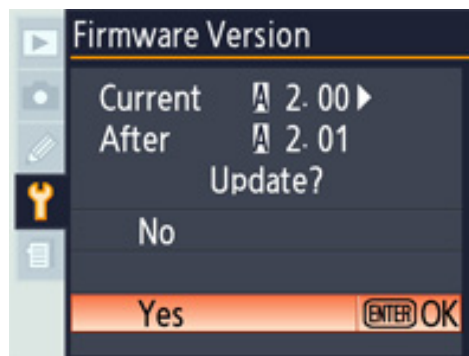


4 The current firmware version will be displayed. Press the multi selector to the right.

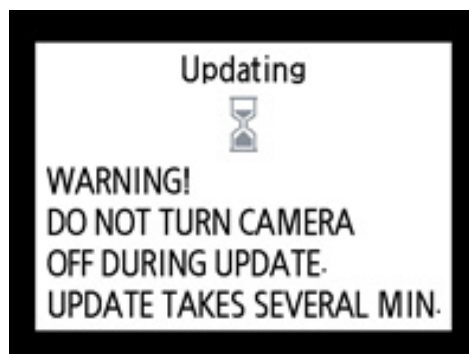


5 A firmware update dialog will be displayed. Highlight **Yes** and press the **ENTER** button to begin the update.

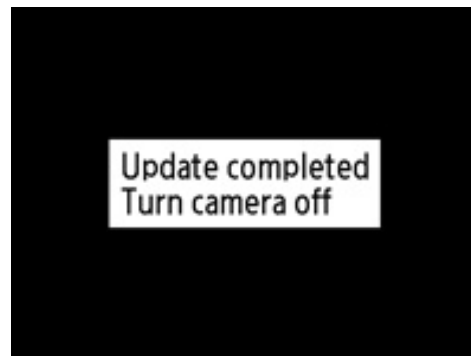
* Illustration shows dialog displayed when A firmware is updated. Follow the same steps to update B firmware.



6 About five minutes are required to complete the update. Do not perform any operations while the message shown at right is displayed.



- 7** The message shown at right will be displayed when the update is complete.



- 8** Confirm that the update was completed successfully.

8-1. Turn the camera off and remove the memory card.

8-2. Check the camera firmware version as described in **Step2**,
"Check the current camera firmware version."

- 8-3. If the version displayed is 2.01, the update was successful.
*Illustration shows dialog displayed when updates for both A firmware and B firmware are completed.



- 9** **Format the memory card.**

After upgrading A firmware, return to Step 4 and upgrade B firmware.

- 10** If you changed the **USB** setting from **PTP** to **Mass Storage** to update the camera firmware, return to the **USB** menu and select **PTP**.

This completes the firmware update.