

What's New in Capture NX 1.1

This document covers all of the new functionality supported by Capture NX. In addition to supporting the new Nikon D80 and D40 digital cameras, Capture NX version 1.1 builds on the features described in the manual to provide enhanced functionality. Please consult this document for all of the major changes found within Capture NX version 1.1.

System Requirements (Page 5)

Capture NX version 1.1 now adds support for Windows Vista and Intel based Macintosh computers.

Operating Systems

Windows: Windows Vista (preinstalled 32-bit Home Basic/Home Premium/Business/Enterprise/Ultimate editions)

Processors

Macintosh: PowerPC G4, PowerPC G5, Intel Core Duo, Intel Core 2 Duo, Intel Xeon

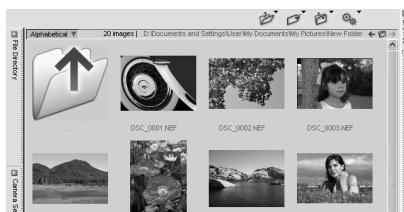
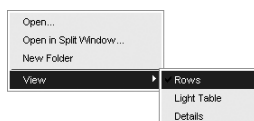
New Features

Browser (Page 29)

New shortcuts were added to enable you to open the Browser or change the browser view. If the Browser is closed when using one of the shortcuts listed below, the Browser will be opened in that view. If the Browser is already open when using one of the shortcuts listed below, the view will either switch to the view indicated by the shortcut (if the Browser is set to a different view already) or the Browser will close, if the view is the same as the shortcut.

• Open Browser in Rows view / Switch to Rows view

Shortcut: Alt + 1 (Windows)
Option + 1 (Mac OS)



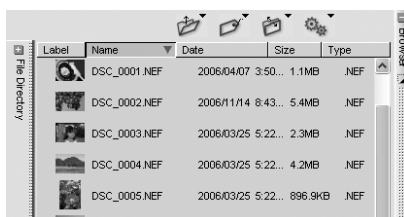
• Open Browser in Light Table view / Switch to Light Table view

Shortcut: Alt + 2 (Windows)
Option + 2 (Mac OS)



• Open Browser in Details view / Switch to Details view

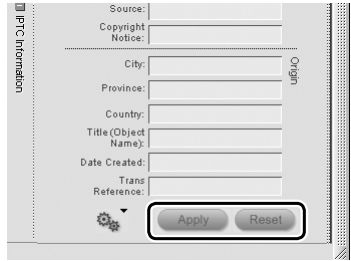
Shortcut: Alt + 3 (Windows)
Option + 3 (Mac OS)



New Features

IPTC (Page 41)

The OK and Cancel buttons were renamed to Apply and Reset to better describe their functionality. Clicking on the Apply button after adding information to the IPTC palette will save that information to your file. Clicking Reset prior to clicking Apply will remove any changes made prior to selecting the Apply button.



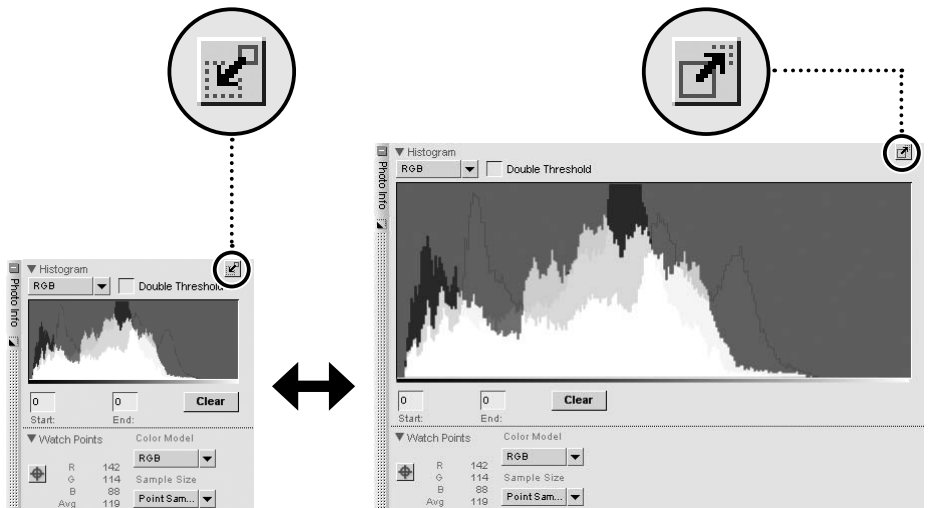
Selection Brush (Page 91)

New shortcuts were added to enable you to set the opacity of the Brush. Use these shortcuts to immediately change the opacity of the brush while you are working with the Selection Brush.

Shortcut: Each number 0 through 9 sets the brush's opacity to a 10% increment, i.e. 1 = 10%, 2 = 20%, etc. 0 = 100%. Pressing another number key after the first number key will modify the opacity further giving control in 1% increments, i.e. pressing 55 in close succession will result in 55%, pressing 06 in close succession will result in 6%.

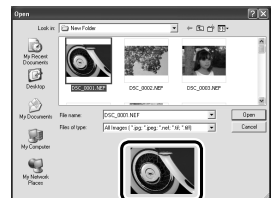
Photo Info (Page 99)

The layout of the Photo Info palette was updated to provide more precision while working with the Histogram. The default size of the Histogram was enlarged, while a new button was added to enable you to display an enlarged version of the histogram. Toggle between the two palette sizes by clicking on the Resize Palette button as shown below.



Open Image... (Page 113)

The "Open" dialog displayed when Open Image is selected from the File menu now contains a preview.

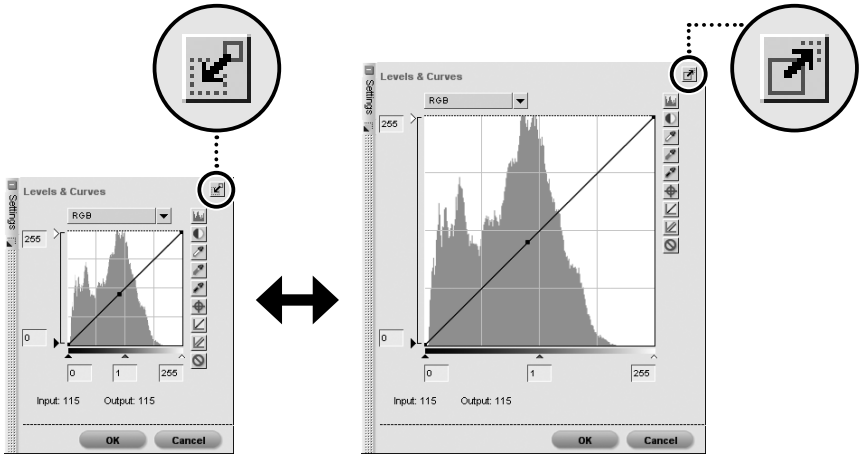


Open With... (Page 113)

The Open With command was updated in order to improve the functionality and interaction with this feature. After selecting Open With, Capture NX will create a 16-bit TIFF file in the same folder location as the file currently being edited within Capture NX with the same name. This ensures that any naming conventions or file organization you created in the original file is maintained when opened in a separate application.

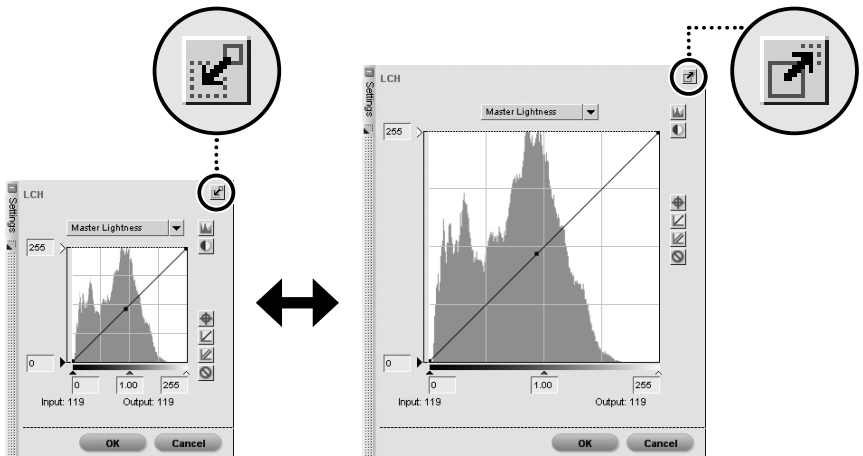
Levels & Curves (Page 137)

The Levels & Curves tool can now be enlarged. Toggle between the two palette sizes by clicking on Resize Palette button as shown below.



LCH (Page 145)

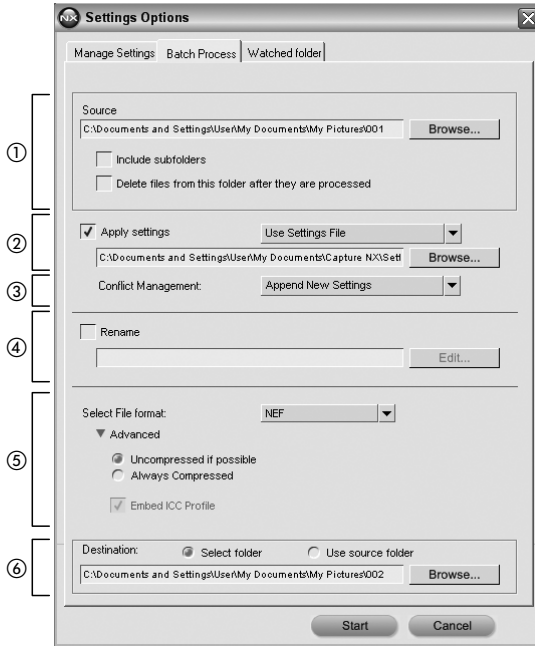
The LCH tool can now be enlarged. Toggle between the two palette sizes by clicking on Resize Palette button as shown below.



Batch Process (Page 188)

The Batch Process dialog has been updated to provide added functionality as well as to streamline the interaction with this feature.

It is now possible within the Batch Process dialog to start a batch process without applying a settings file or to revert any NEF files processed to their original state.



① Source

Browse

Click on the Browse button within the source section to locate the folder that contains the images you wish to apply a batch process to.

Include Subfolders

Check the Include Subfolders checkbox if you would like to process the contents of the folder along with the contents of any folders within the targeted folder.

Delete Files From Folder After They Are Processed

The Delete Files From Folder After They Have Been Processed option will delete the original files after the batch process has been completed.

② Apply Settings

Check this box if you would like to apply a settings file to your image or if you would like to revert any NEF files to their original state.

Batch Mode

· Use Settings Files

By selecting this option, you will be able to select a Settings File to apply to the images identified in the Source section.

Browse: Click on the Browse button within the Apply Settings section to locate a Settings File to apply to the images.

· Use Original Settings

By selecting this option, Capture NX will revert any NEF processed through the batch process to the state prior to when any enhancements were made to it through Capture NX. This includes both RAW NEF files, which will be processed to the original settings created by the camera, or Converted NEF files, which will remove all enhancements made within Capture NX.

③ Conflict Management

The Conflict Management pop-up Menu enables you to choose how Capture NX should resolve potential conflicts that may arise while performing a Batch Process on NEF images. You can choose from the following options:

Append New Settings

The Append New Settings option is the default option when applying a Batch Process. This option will automatically add the enhancements from the Settings File to all of the images affected by the Batch Process.

Replace Current Settings

The Replace Current Settings option will apply the enhancements from the Settings File to all images and will overwrite any enhancements that may already be contained with the images affected by the Batch Process.

Show Differences

The Show Differences option enables you to interact with the Show Differences dialog for any images that already contain enhancements. With this process, you can choose which enhancements to replace and which enhancements to keep within the images affected by the Batch Process.

④ Rename

By checking the Rename checkbox, Capture NX will rename the images using the naming system found within the File Naming window. Click on the Edit button to display the File Naming Dialog.

⑤ Select File Format

Choose a file format for processed images from the Select File Format pull-down menu. The following options are available:

- **NEF**: In the Advanced section, choose a compression setting from Uncompressed if possible and Always Compressed.
- **TIF** (TIFF): In the Advanced section, choose a color model (RGB or CMYK), bit depth (Always 8 bit or 16 bit if possible), and compression type (None or LZW).
- **JPG** (JPEG): Use the pull-down menu to choose from Highest Compression Ratio, Good Compression Ratio, Good Balance, Good Quality, and Excellent Quality, or select the desired balance between image quality and compression using the slider.

Check Embed ICC Profile to embed an ICC color profile in each image.

⑥ Destination

The Destination section enables you to identify the location to use when saving the image.

Select Folder

By choosing the Select Folder option, you can manually identify the destination folder you wish to use for the images after the batch process. Click on the browse button to identify the location to place the processed images.

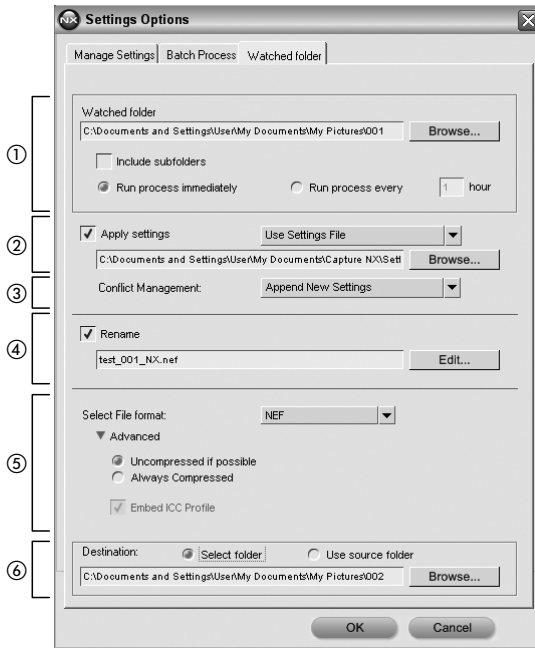
Use Source Folder

The Use Source Folder option will place the processed files in their original folder.

Watched Folder (Page 190)

The Watched Folder dialog has been updated to provide added functionality as well as to streamline the interaction with this feature.

It is now possible within the Watched Folder dialog to start a Watched Folder process without applying a settings file or to revert any NEF files processed to their original state.



① Watched Folder

Browse

Click on the Browse button to locate the folder that you would like Capture NX to monitor for new images to apply a batch process to.

Include Subfolders

Check the Include Subfolders checkbox if you would like Capture NX to monitor the contents of any folders within the targeted folder as well as the contents of the targeted folder.

Run Process Immediately

The Run Process Immediately will continually monitor the targeted folder for new images and apply the Settings File to any new images as soon as they are placed within the targeted folder.

Run Process Every

Enter a number to determine how frequently, in hours, Capture NX should review the targeted folder for new images.

② Apply Settings

Check this box if you would like to apply a settings file to your image or if you would like to revert any NEF files to their original state.

Batch Mode

- **Use Settings Files**

By selecting this option, you will be able to select a Settings File to apply to the images placed within the Watched Folder.

Browse: Click on the Browse button within the Apply Settings section to locate a Settings File to apply to the images.

- **Use Original Settings**

By selecting this option, Capture NX will revert any NEF processed through the Watched Folder to the state prior to when any enhancements were made to it through Capture NX. This includes both RAW NEF files, which will be processed to the original settings created by the camera, or Converted NEF files, which will remove all enhancements made within Capture NX.

③ Conflict Management

The Conflict Management pop-up Menu enables you to choose how Capture NX should resolve potential conflicts that may arise while performing a Batch Process on NEF images. You can choose from the following options:

Append New Settings

The Append New Settings option is the default option when applying a Batch Process. This option will automatically add the enhancements from the Settings File to all of the images affected by the Batch Process.

Replace Current Settings

The Replace Current Settings option will apply the enhancements from the Settings File to all images and will overwrite any enhancements that may already be contained within the images affected by the Batch Process.

Skip & Continue

The Skip & Continue option will automatically skip any image in which a conflict was identified without processing that image. An error entry will be created within the Log file informing you the name of the image and the time that the conflict was identified.

④ Rename

By checking the Rename checkbox, Capture NX will rename the images using the naming system found with the File Naming window. Click on the Edit button to display the File Naming Dialog.

⑤ Select File Format

Choose a file format for processed images from the Select File Format pull-down menu. The following options are available:

- **NEF:** In the Advanced section, choose a compression setting from Uncompressed if possible and Always Compressed.
- **TIF (TIFF):** In the Advanced section, choose a color model (RGB or CMYK), bit depth (Always 8 bit or 16 bit if possible), and compression type (None or LZW).
- **JPG (JPEG):** Use the pull-down menu to choose from Highest Compression Ratio, Good Compression Ratio, Good Balance, Good Quality, and Excellent Quality, or select the desired balance between image quality and compression using the slider.

Check Embed ICC Profile to embed an ICC color profile in each image.

⑥ Destination

The Destination section enables you to identify the location to use when saving the image.

Select Folder

By choosing the Select Folder option, you can manually identify the destination folder you wish to use for the images after the batch process. Click on the browse button to identify the location to place the processed images.

Use Source Folder

The Use Source Folder option will place the processed files in their original folder.

View Menu (Page 195)

Show Watch Points

The Show Watch Points option is enabled by default. When this option is enabled, any Watch Points added through the Photo Info palette are displayed. By disabling this option, Watch Points can be hidden.

