

**Nikon**

# Windows XP Home Edition / Windows XP Professional

Nikon Scan (Ver.3.1.2)

**This manual is for those users who are running Nikon Scan (Ver. 3.1.2) under Windows XP Home Edition / Professional.**

# Using a Scanner with Windows XP (Home Edition /Professional)

## Registering a Scanner with Windows XP

(SUPER COOLSCAN 8000 ED / SUPER COOLSCAN 4000 ED /COOLSCAN IV ED / LS-2000 / COOLSCAN III)

The screenshots in this manual show the registration procedure for the SUPERCOOLSCAN 4000ED. The camera must be registered as a hardware device when it is connected to the computer for the first time.

You will need to log on as the “Computer Administrator” when registering a scanner. Note that you should also log on as the “Computer Administrator” when using, installing or uninstalling Nikon Scan.

### Step I

The first time the scanner is connected to the computer, the “Found New Hardware Wizard” will be displayed. Select **Install from a list or specific location** and click **Next**.

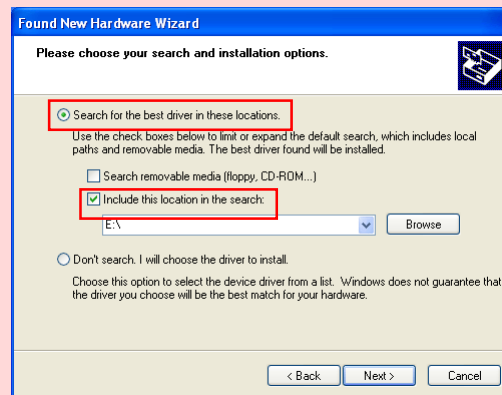


### Caution (LS-2000 / COOLSCAN III Users)

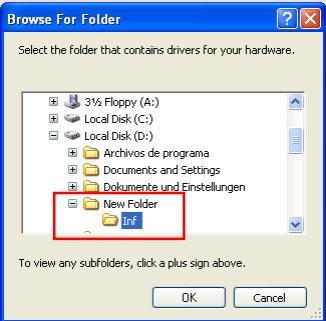
You will need the Windows XP compatible ASPI layer for your SCSI board or SCSI card in order to use the LS-2000 and the COOLSCAN III with Windows XP.

### Step 2

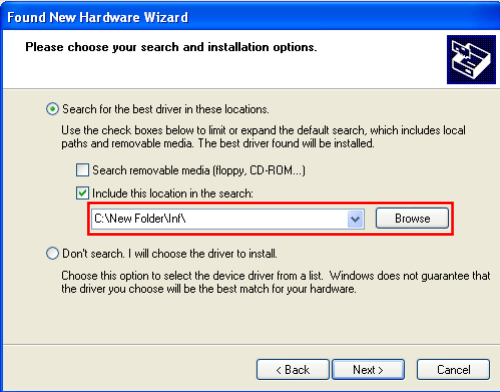
The dialog shown below will be displayed. Select **Search for the best driver in these locations**, then check **Include this location in the search**, then check **Include this location in the search**.



If, for example, the *Inf* Folder created when you ran the downloaded *nsinfxp.exe* file is inside "New Folder", click the **Browse** button, and select "C:\New Folder\Inf".



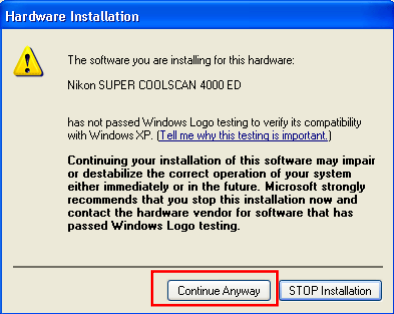
Click **OK**; the dialog shown below will be displayed.



As an example, the above screenshot shows the driver location as "C:\New Folder\Inf".

### Step 3

During the driver installation, the dialog shown at right will appear; click **Continue Anyway**, and carry on with the installation.



### Step 4

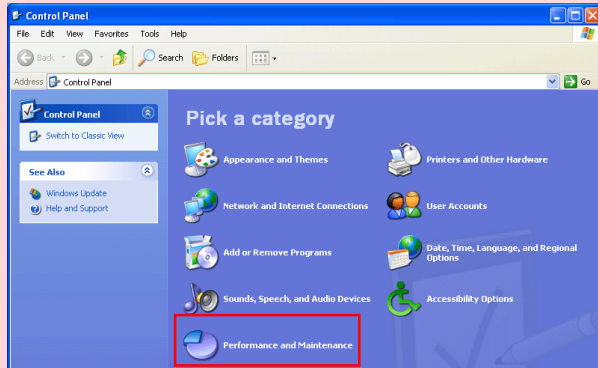
When the driver installation has been completed, the dialog shown below will be displayed; click **Finish** to close the wizard.



## Step 5

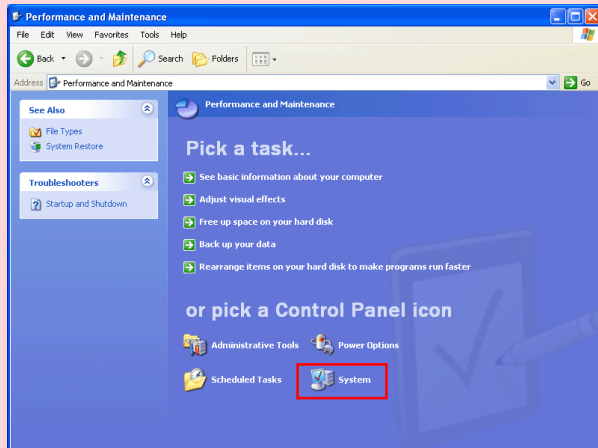
Once registration is complete, follow the steps below to check that the scanner has been correctly registered with the system.

Select **Control Panel** from the **Start** menu to display the window shown below. Click **Performance and Maintenance**.



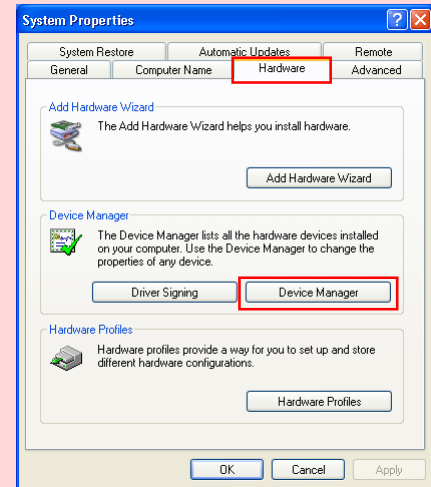
## Step 6

The Performance and Maintenance window will be displayed. Click **System**.



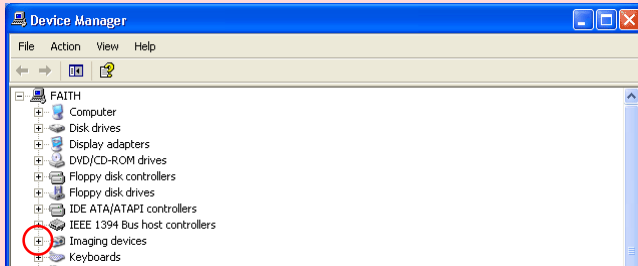
## Step 7

The System Properties window will be displayed. Select the Hardware tab and click the **Device Manager** button in the Device Manager section.



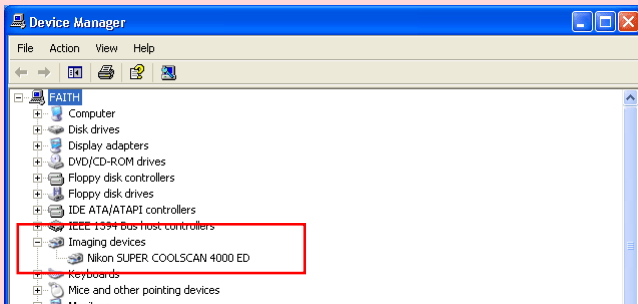
## Step 8

The Device Manager window will appear. Confirming that “Imaging Device” is listed in the Device Manager window, and click the “+” next to the listing.



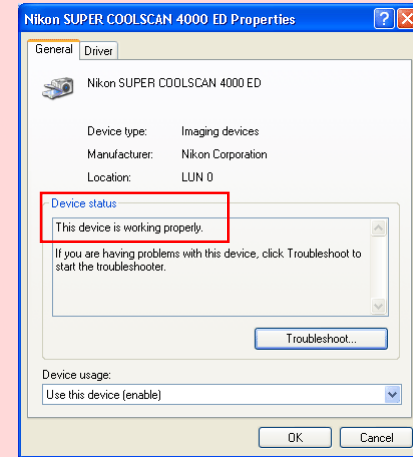
## Step 9

After confirming that “(the name of your scanner)” is listed under “Imaging Device,” double-click the listing to open the Properties window.



## Step 10

The Properties dialog for your scanner will be displayed. Click the General tab and confirm that “This device is working properly” appears under “Device status”. Click **OK**.



Close the Device Manager, then click **OK** to close the System Properties window. Device registration is now complete